



Fairmont

FAIRMONT CHATEAU LAKE LOUISE

LUXURY BASE CAMP FOR ADVENTURE

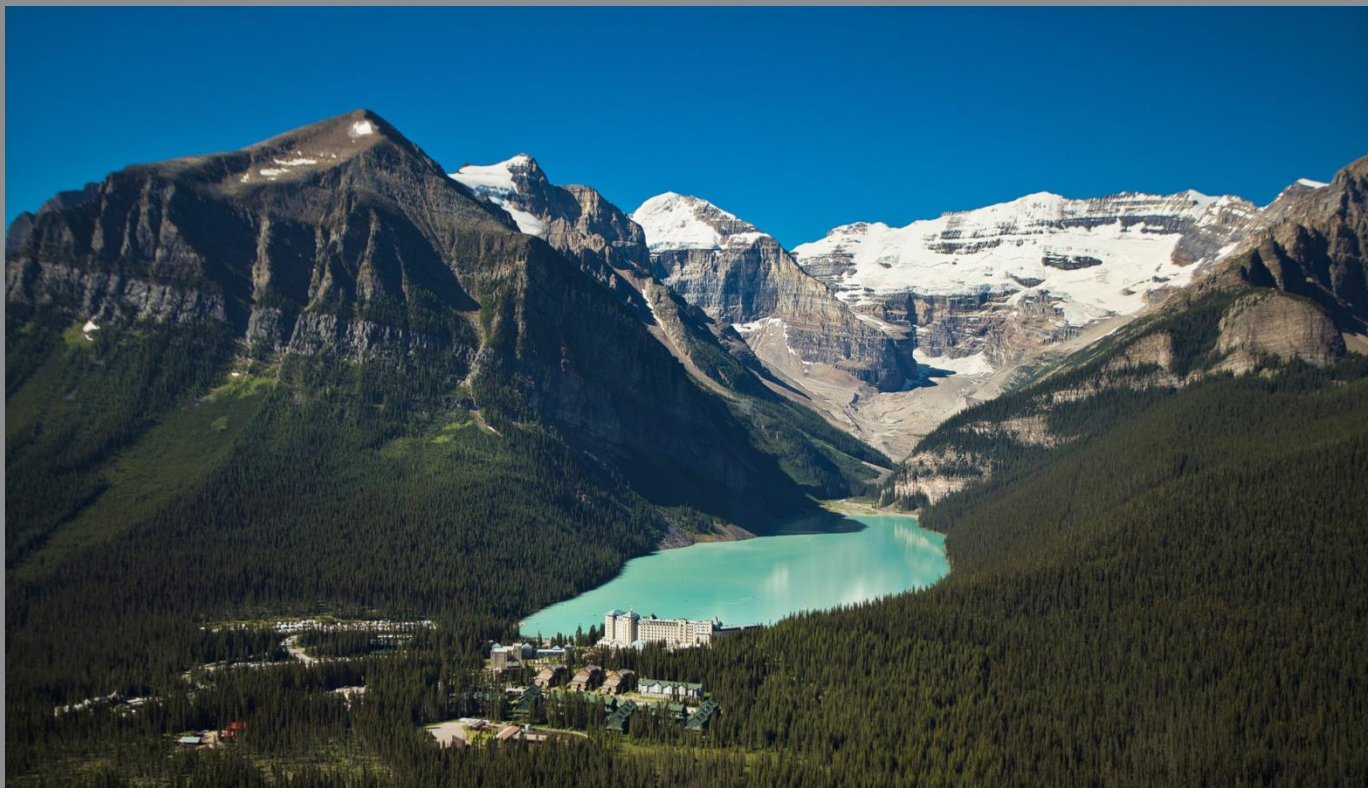




Fairmont

Connected by Road, Rail & Air



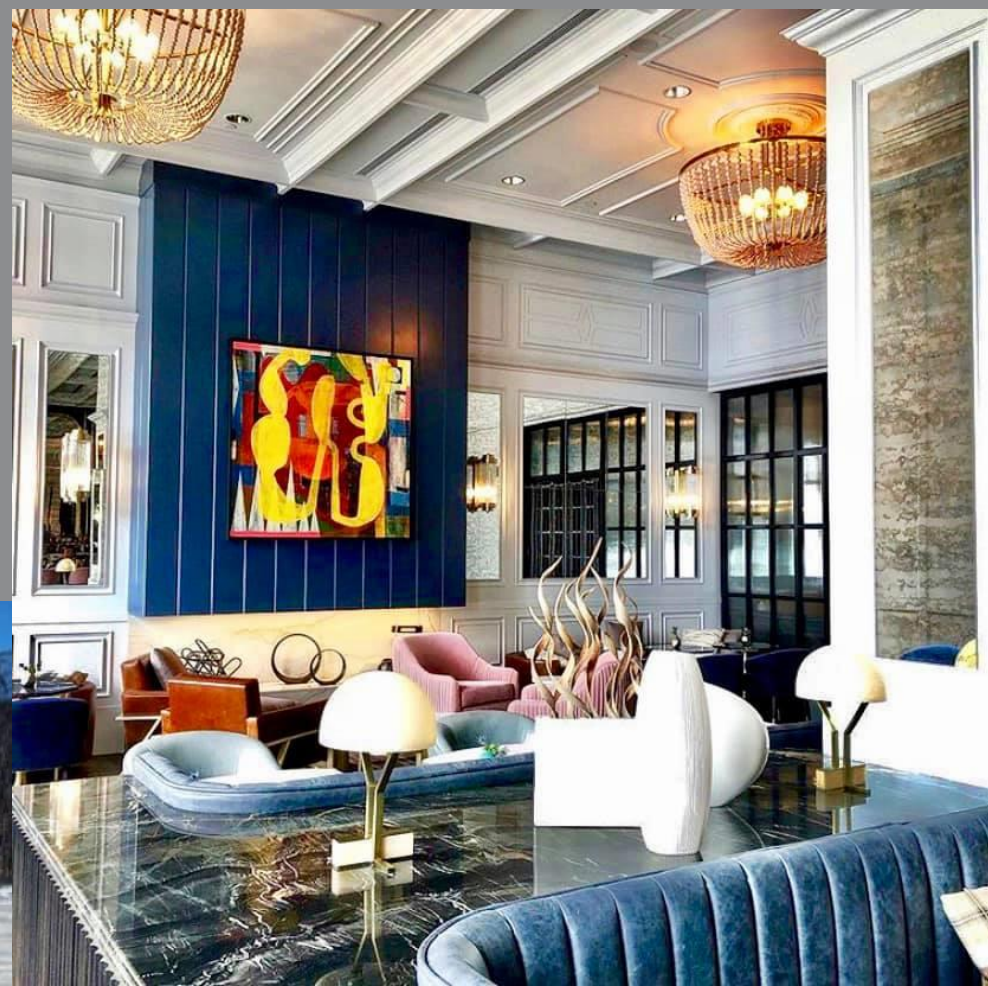


Fairmont Chateau Lake Louise is the only hotel that will ever be built on the shores of Lake Louise, overlooking the beautiful Victoria Glacier. The lake is 50 feet higher than the hamlet of Lake Louise, whose elevation is 5,200 feet. The population of Lake Louise is around 1,200 people.



Fairmont

- Two and a half hour drive from Calgary Intl Airport
- 10 minutes from Lake Louise Ski Resort
- Complimentary shuttle to Lake Louise Ski Resort
- Six restaurants – Swiss, Italian, Canadian Fairmont Spa
- Base camp for activities: guided snowshoeing, cross country skiing, skating, sleigh rides, horseback riding, hiking, canoeing and much more.





Fairmont



Fairmont Lakeview Room



Fairmont



Fairmont Gold Lakeview Room



Fairmont



Wellness Retreats



Fairmont

Mountain Heritage Guide Program



Six Restaurants/Lounges



Newly renovated rooms & suites



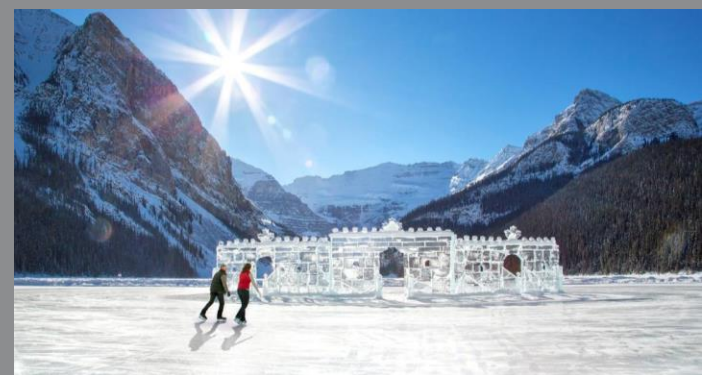
Adventure on the doorstep





WINTER MAGIC

Fairmont





Fairmont



Kathy Dales

Director, Tour & Leisure

Kathy.dales@fairmont.com