

MEETINGS & EVENTS AT FAIRMONT CENTURY PLAZA

Fairmont
CENTURY PLAZA





EVENTS AT CENTURY PLAZA

Fairmont Century Plaza has been a magnet for visionaries and icons since its opening in 1966. As the venue for past Emmys and Grammys and the first and only Presidential State dinner hosted outside of the White House, Fairmont Century Plaza sets the stage for remarkable meetings and events. Conveniently located in the heart of Century City, Fairmont Century Plaza is truly at the center of where business meets Hollywood.

Fairmont Century Plaza's nearly 24,000 square feet of private event space offers a number of venues for meetings and events of all sizes and equipped with the latest technology. From award shows and resplendent galas to presidential and royal affairs---we do it all. Highly flexible function spaces range from private conference rooms for small groups to the largest ballroom in West Los Angeles, our Los Angeles Ballroom, which can accommodate up to 1,500 guests for a seated dinner where guests are grandly welcomed by a private valet entrance.

Modern glamour is in order in all of our rooms and salons with flexible layouts and the latest connectivity and audio-visual technology. Our in-house audio-visual partner, PSAV, brings professional multimedia capability and artistic sensibility to any type of corporate meeting, retreat or social gathering. Our dedicated and experienced team of experts can assist with all aspects of planning a successful meeting or social event with the utmost precision and attention to detail, from custom dining options to intricate floor plans. Extraordinary experiences await you when you host your event at Fairmont Century Plaza.



DINNER OF THE CENTURY

August 1969

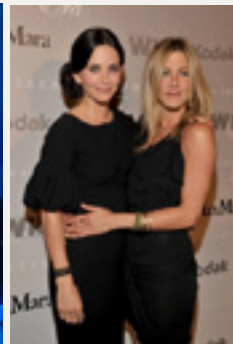
On the evening of August 13, 1969, President and Mrs. Nixon hosted the first and only Presidential state dinner outside of the White House, also known as the Dinner of the Century at the Century Plaza, to honor the safe return of the Apollo 11 astronauts. Over 50 members of Congress, representatives from 83 foreign nations and 14 members of the President's Cabinet attended the star-studded gala, often recognized as one of the greatest – if not the greatest – state dinners held outside of Washington.

One thousand four hundred and forty people attended this glamorous occasion, including the astronauts' families, space and aviation pioneers, space-related committees, and the greatest stars of Hollywood. All in one room, one could find Mrs. Walt Disney, Ed and Don Nixon, Justice Warren Burger, Buddy Rodgers, and the widows of the astronauts of Apollo 1.

PRESIDENTIAL CELEBRATIONS

1980-1988

Century Plaza has always been popular with U.S. Presidents; in fact every president since Ford has stayed at Century Plaza or visited in some capacity. However, the hotel is perhaps most closely associated with Former President Ronald Reagan who often stayed and hosted many of his fundraisers and inaugural celebrations in our storied ballroom. During this time, the hotel was frequently referred to as the “Western White House.” Its heavy use by national and world leaders has made Century Plaza a popular destination for political activism.



STAR-STUDDED AFFAIRS

Century Plaza has hosted countless star-studded galas, charity functions and important entertainment industry events over the course of its distinguished history, such as:

Director's Guild Awards, Emmys, Grammys, British American Film & Television Awards and Writer's Guild Awards. From stately to intimate affairs, the Century Plaza has conducted it all.

ALLSAFE

Fairmont Century Plaza understands the importance of live meetings and events and believes in the power of bringing great minds together. We have developed the following protocols to ensure that all attendees and team members have confidence in the safety of our meeting facilities and banquet functions.

KEY PROTOCOLS

- Room configurations will be adjusted to ensure proper social distancing between attendees based on current guidelines (please inquire for COVID designed floor plans to meet your personal specifications)
- Capacities will be decreased to allow for a minimum of 6 feet of physical distance between attendees
- Electrostatic sprayers will be used to disinfect meeting rooms, public spaces and other guest exposure areas
- A gloved & masked welcome greeter will be provided to offer hand sanitizer and masks upon arrival and to manage check-in queues to promote physical distancing
- Mandatory screening for all attendees, which may include a temperature check
- Hand sanitizer stations will be provided in key areas throughout event spaces
- All food and beverage offerings will be served in individual servings. Self-service buffet presentations will be temporarily suspended and replaced with alternative service styles agreed upon by the hotel and client.
- Gloves & masks will be required for all employees servicing event
- Disinfection of all touchpoints (tables, chairs, linens, etc.) between events with EPA-registered chemicals proven effective in preventing the transmission of COVID-19
- Utilization of [Westfield Century City's outdoor space](#) for additional breakouts, meal service and social gatherings (please inquire for more details)
- Our Audio Visual Partner, [PSAV](#) can offer extended streaming capabilities for general session overflow into outdoor public spaces and in-room viewing (please inquire for more details and pricing options)



EVENT VENUES

LOS ANGELES BALLROOM

The Los Angeles Ballroom is the most iconic ballroom in Los Angeles, which has been home to numerous award shows, charitable events and social gatherings since 1966. The newly renovated space spans over 13,000 square feet with towering 20-foot ceilings. The Los Angeles Ballroom features a built in stage and can be separated into two or three individual salons to accommodate your group's specific needs. Guests will be grandly welcomed by a private event valet entrance accessible from Constellation Boulevard and a stunning pre-function space that is just under 10,000 square feet. The Los Angeles Ballroom is the perfect blank canvas for a masterpiece event.

CONSTELLATION BALLROOM

At over 3,000 square feet, the elegantly designed Constellation Ballroom offers an intimate space for up to 330 seated guests. The room features a ceiling height of 20 feet and boasts eight stunning gold chandeliers overhead. The Constellation Ballroom can be divided in two equal salons, to create an event space perfect for smaller groups or breakouts. The space also has the option for door access to the Los Angeles Ballroom for groups who wish to utilize both spaces for their event. Like the main ballroom, guests will be welcomed by our exclusive private event arrivals entrance and a separate pre-function space that is just over 2,000 square feet.



CALIFORNIA LEVEL

On the same level as Fairmont Century Plaza's stunning ballrooms, the California Level features three additional private rooms: Galaxy, Zenith and Meridian. With sophisticated light wood accents and ample room for storage, these spaces are an ideal option for meetings and private events alike. Additionally, they can also be used as supporting rooms for larger events held in our ballrooms.

CENTURY LEVEL

Our Century Level meeting spaces, located one level below the main lobby, are ideal for meetings from 10 to 79 guests. This level of event space houses six private rooms available for meetings, breakouts and meals alike. At just over 1,100 square feet, Brentwood is the largest room on this level and can accommodate up to 79 guests. Our most intimate space, the Century Boardroom, is available for groups of up to 20 and includes a built-in boardroom table perfect for all your important meetings. With dark wood accents and great audio-visual capabilities, our Century Level meeting spaces are perfect for your next event.



THE WRITER'S DEN

A secret door hidden behind the custom pewter bar of our signature restaurant, Lumière, leads guests to the restaurant's handsomely decorated private dining room, The Writer's Den. The Writer's Den allows up to 16 guests to be entertained in an intimate atmosphere for both seated dinners and cocktail receptions. The design of the space is inspired by the Lost Generation, a group of expat writers of the 1920's that lived a bohemian lifestyle of Paris café hopping - working, learning, reading and drinking, soaking in the cosmopolitan energy of Paris. Gorgeous antique bronze light fixtures and oak herringbone plank flooring imported from a French villa add to the feeling of history and grandeur. Reserve The Writer's Den to make your next event a memorable one.

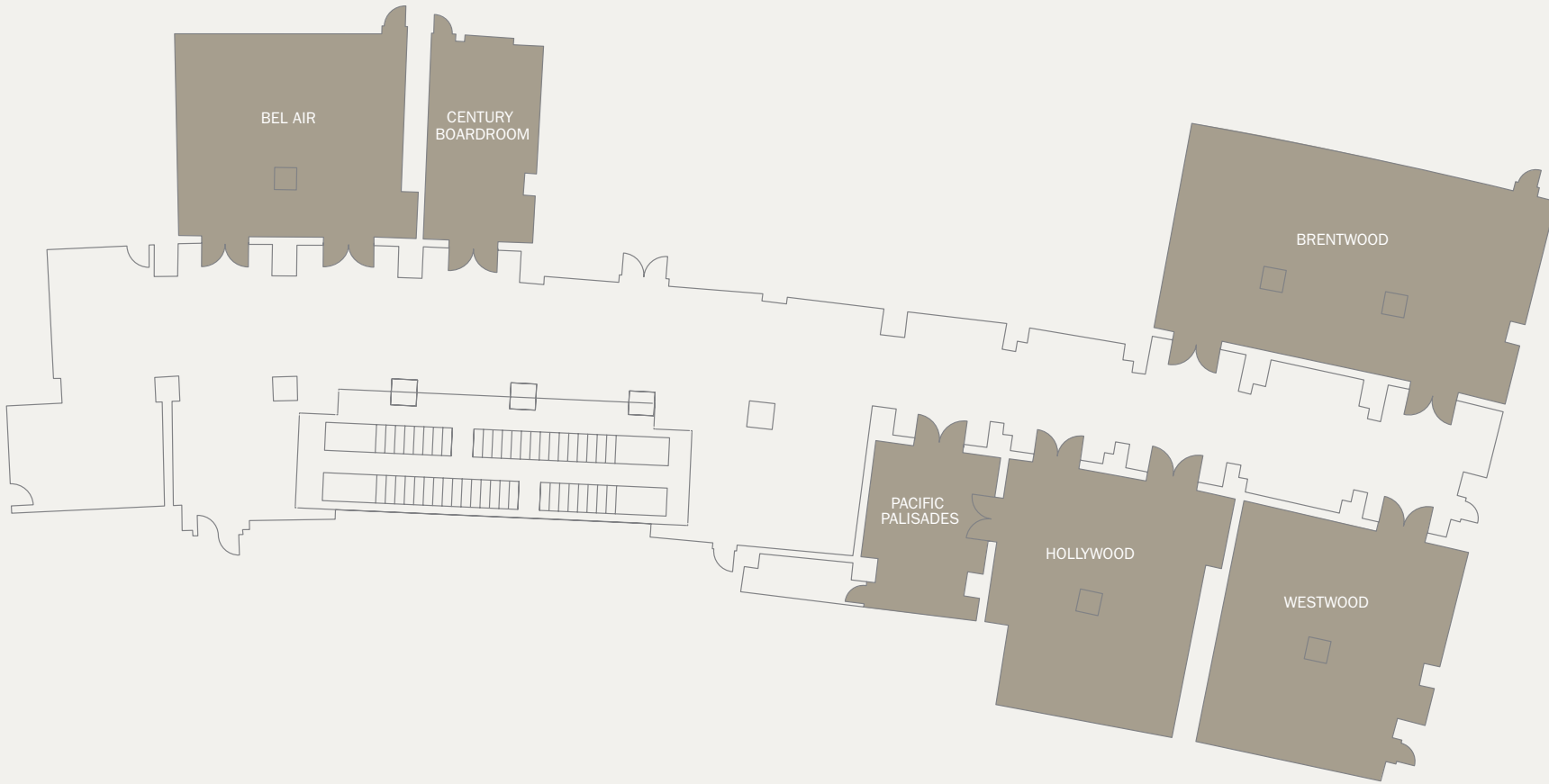











ROOFTOP POOL

Host your next social soirée or corporate gathering at our spacious rooftop pool lounge featuring breathtaking views of the Los Angeles skyline. Our 4000-square-foot rooftop can hold over 200 guests for reception-style events.

CENTURY LEVEL P1



	OVERALL DIMENSIONS		SQUARE		HEIGHT		CAPACITIES							
	FEET	METERS	FEET	METERS	FEET	METERS	66" ROUNDS	RECEPTION	THEATER	CLASSROOM	BOARDROOM	U-SHAPE	H/S	MAX OCCUPANCY
														
BEL AIR	28' X 25'	8.5 X 7.6	700	65	11'	3.4	48	48	48	42	24	27	30	48
BRENTWOOD	45' X 26'	13.7 X 7.9	1,170	108	11'	3.4	79	79	79	51	42	20	42	79
WESTWOOD	28' X 30'	8.5 X 9.1	840	78	11'	3.4	55	55	55	42	24	24	30	55
HOLLYWOOD	25' X 30'	7.6 X 9.1	750	69	11'	3.4	52	52	52	30	24	21	24	52
PACIFIC PALISADES	15' X 20'	4.5 X 6.1	300	27	11'	3.4	21	21	21	-	10	-	-	21
CENTURY BOARDROOM	14' X 25'	4.2 X 7.6	350	32	11'	3.4	-	-	-	-	20	-	-	24

CALIFORNIA LEVEL P2



CALIFORNIA LEVEL P2

	OVERALL DIMENSIONS		SQUARE		HEIGHT		CAPACITIES							
	FEET	METERS	FEET	METERS	FEET	METERS	66" ROUNDS	RECEPTION	THEATER	CLASSROOM	BOARDROOM	U-SHAPE	H/S	MAX OCCUPANCY
														
LOS ANGELES BALLROOM	139' X 91'	42.3 X 27.7	13,078	1,214	20'	6	1,512	1,868	1,475	800	-	-	-	1,868
LOS ANGELES BALLROOM HALF	69' X 91'	21.0 X 27.7	6,539	607	20'	6	756	934	700	400	-	-	-	934
SANTA MONICA	46' X 91'	14.0 X 27.7	4,359	404	20'	6	432	622	400	250	-	-	--	622
LOS ANGELES	46' X 91'	14.0 X 27.7	4,359	404	20'	6	432	622	400	250	-	-	-	
BEVERLY HILLS	46' X 91'	14.0 X 27.7	4,359	404	20'	6	432	622	400	250	-	-	-	
SANTA MONICA AND LOS ANGELES	92' X 91'	28.0 X 27.7	8,718	808	20'	6	864	1,244	800	500	-	-	-	
LOS ANGELES AND BEVERLY HILLS	92' X 91'	28.0 X 27.7	8,718	808	20'	6	864	1,244	800	500	-	-	-	
LOS ANGELES PRE-FUNCTION	160' X 61'	48.7 X 18.6	9,760	906	9'-18'9"	2.7-5.7	-	1,828	-	-	-	-	-	1,828
CONSTELLATION	42' X 73'	12.8 X 22.2	3,066	284	20'	6	336	466	300	180	70	75	84	466
CONSTELLATION 1	42' X 36.5'	12.8 X 11.1	1,533	142	20'	6	144	233	130	80	30	32	36	233
CONSTELLATION 2	42' X 36.5'	12.8 X 11.1	1,533	142	20'	6	144	233	130	80	30	32	36	233
CONSTELLATION PRE-FUNCTION	35' X 64'	10.6 X 19.5	2,240	208	8'3"	2.5	-	-	-	-	-	-	-	466
GALAXY	29' X 42'	8.8 X 12.8	1,218	113	9'	2.8	85	85	85	45	24	21	30	85
MERIDIAN	27' X 30'	8.2 X 9.1	810	75	9'	2.8	58	58	58	58	36	24	30	58
ZENITH	42' X 30'	12.8 X 9.1	1,260	117	9'	2.8	86	86	86	80	36	27	30	86



THE MEETING OF THE CENTURY

ALL DAY MEETING PACKAGE

Utilizing creative meeting spaces intuitively designed to motivate guests and an expert staff dedicated to making your event a success, Fairmont Century Plaza has everything to offer for your next meeting.

PACKAGE INCLUDES

Meeting room set to fit your group's needs with choice of Boardroom, Theater, U Shape, Hollow Square, or Crescent Rounds configurations.

Audio Visual Meeting Room Projector Package provided by PSAV to include AV cable lot, LCD projector, projection stand and tripod screen.

Food and beverage offerings from our exquisite in-house culinary team.

FAIRMONT KING

211 Available • 320-370 SQ. FT.

Situated on floors 3-9 with striking cityscape views, our Fairmont King rooms set the standard for timeless sophistication and are elegantly appointed with contemporary décor. Comfortably designed to accommodate both business and leisure guests, Fairmont rooms boast bedside charging hubs and reading lamps as well as a seating area with upgraded technologies. Guests will enjoy lavish bathrooms with plush bathrobes and Le Labo toiletries.

DELUXE KING

24 Available • 463-483 SQ. FT.

Our Deluxe King Rooms overlook the city scape of Los Angeles from floors 7 to 9. These high-floor rooms include all the features of our Fairmont rooms as well as a front row seat to our stunning skyline. Guests will also enjoy lavish bathrooms with plush bathrobes and Le Labo toiletries.

ONE BEDROOM SUITE

46 Available • 672-975 SQ. FT.

Our One Bedroom Suites range from 672 to 975 square feet and feature outdoor balconies that overlook the Los Angeles cityscape from the 3rd to the 9th floors. Upgraded with an extra half bath and separate living room with entertaining area and separate dining table, these suites provide the perfect space for pampering and relaxation. Comfortably designed to accommodate both business and leisure guests, our One Bedroom Suites boast king beds, bedside charging hubs and reading lamps as well as a work desk with upgraded technologies. Guests will enjoy lavish marble bathrooms with plush bathrobes and Le Labo toiletries.

FAIRMONT GOLD LUXURY SUITE

2 Available • 1450 SQ. FT.

Genuine personal touches to these lavishly appointed suites include large down pillows and wake-up calls accompanied by coffee, tea, juice and a wide selection of newspapers. Experience our new gold standard in spacious 1450-square-foot suites featuring one king with a sofa bed in the parlor and outdoor balconies. Additional amenities include 65" HDTVs, luxury bedding and fine linens, large dressing area with walk-in closet, marble bathroom with separate soaking tub and soothing Speakman showerhead and luxurious Le Labo bath amenities.

Additional rooms, junior suites and suites are available. Please inquire with your sales representative.

Fairmont
CENTURY PLAZA

2025 AVENUE OF THE STARS | LOS ANGELES, CA, US 90067 | 310 246 4770 | CENTURYPLAZA@FAIRMONT.COM
FAIRMONTCENTURYPLAZA.COM