

21c KANSAS CITY



A modern hallway with a dark floor and walls. The walls are illuminated by vertical light strips in magenta and blue. The hallway leads to a set of double doors at the end. The lighting creates a futuristic and artistic atmosphere.

21c is a transformative 21st century hospitality experience, combining a multi-venue contemporary art museum, genuine hospitality, and a chef-driven restaurant.

Locally rooted, yet globally engaged.

The New York Times



SLEEP WITH ART


Founded by married duo Steve Wilson and Laura Lee Brown, 21c is an innovative hospitality experience.

Brought to life to revitalize the downtown core of their beloved hometown of Louisville, KY, Wilson and Brown merged their loves for contemporary art, farm to table dining and hospitality...and by beautiful accident, a brand was born.

9 and on the move

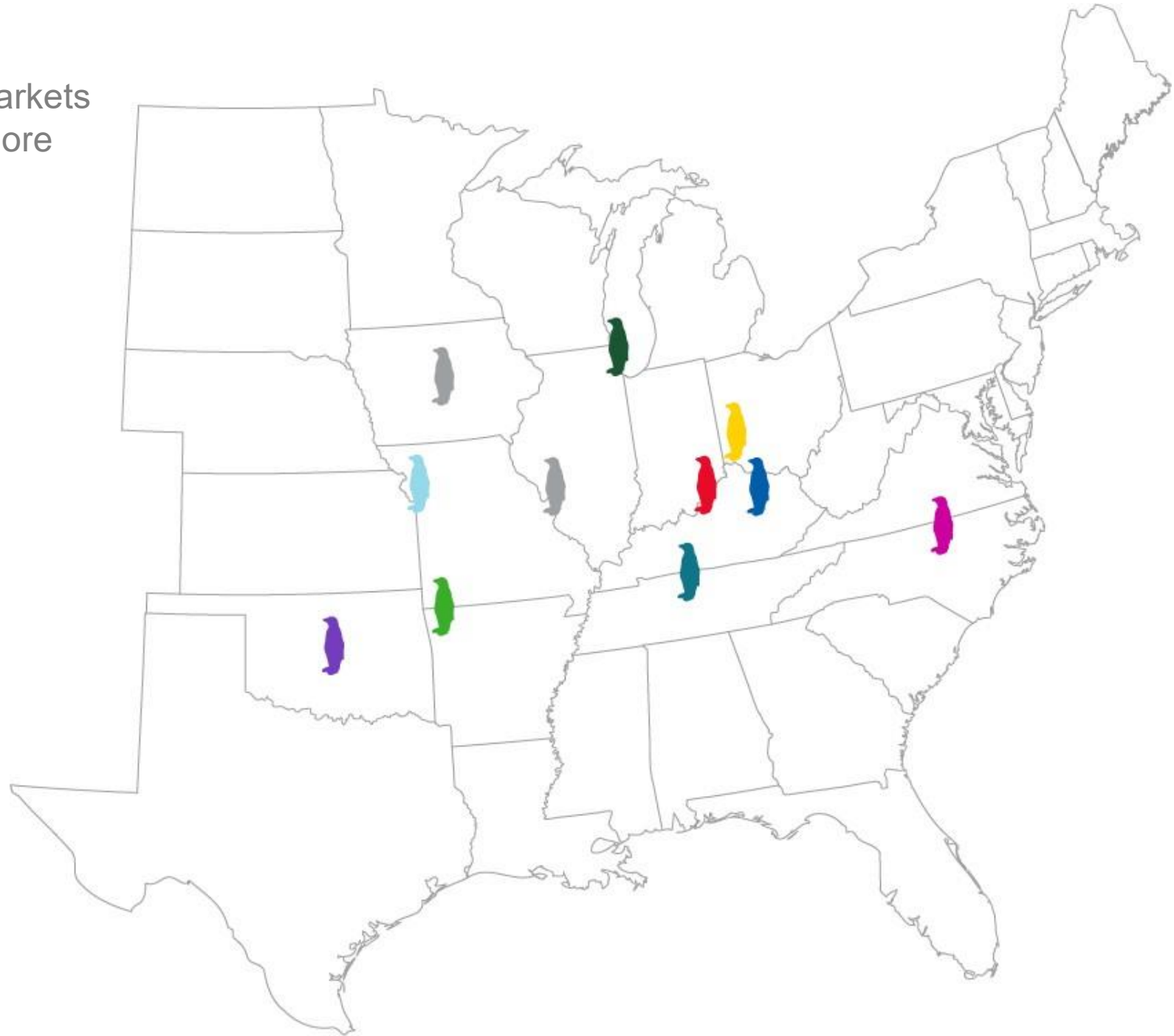
You'll find 21c Museum Hotels in 9 markets across the South and Midwest with more on the way.

Open:

-  21c Louisville (opened 2006)
-  21c Cincinnati (opened 2012)
-  21c Bentonville (opened 2013)
-  21c Durham (opened 2015)
-  21c Lexington (opened 2016)
-  21c Oklahoma City (opened 2016)
-  21c Nashville (opened 2017)
-  21c Kansas City (opened 2018)
-  21c Chicago (opened 2020)

In Development:

- 21c St Louis
- 21c Des Moines



KANSAS CITY





Kansas City

"The City of Fountains"

Kansas City is known for barbecue, its jazz heritage, and number of fountains (there are more fountains here than Rome!). Notable Attractions include the Power & Light / Crossroads District- live music, bars, and restaurants. Art/Culture Institutions like The Nelson Atkins Art Museum and Kemper Modern Art Museum. Two professional sports teams, The Kansas City Chiefs and the Royals.



21C KANSAS CITY

21C

HOTEL
SAVOY



Opened in 2018

21c Kansas City is a one-of-a-kind multi-venue property featuring a world class contemporary art museum, boutique hotel, and chef-driven farm to table restaurant.

Originally opened in the 1890s, The Savoy Hotel and Grill was famed in the community and beyond. A 19th century hotel building with early 20th century additions and Neo-Classic and Art Nouveau features in its design.

120 Rooms
Over 6,000 SF of exhibition and event space
In House Restaurant- The Savoy at 21c

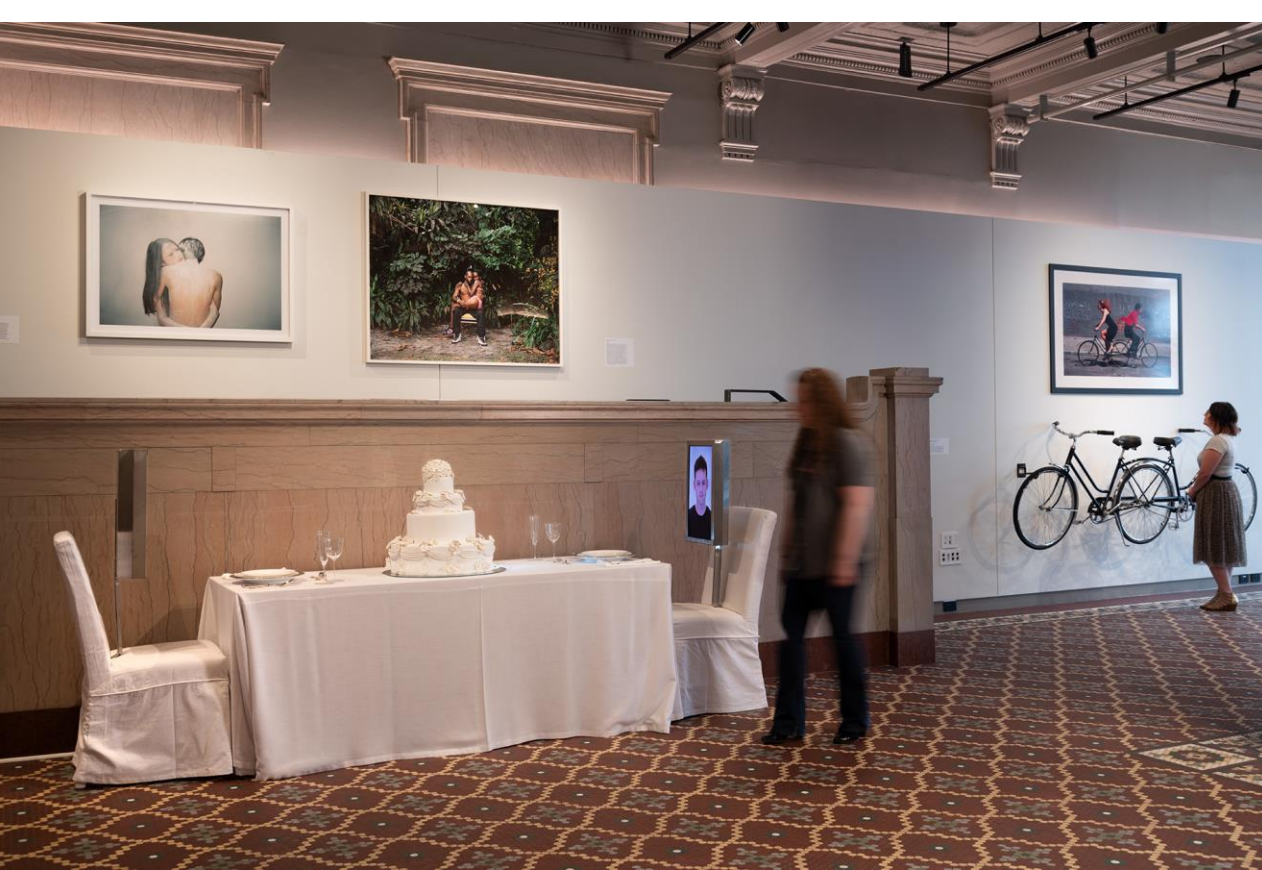


ALL SAFE PROTOCOLS



MUSEUM





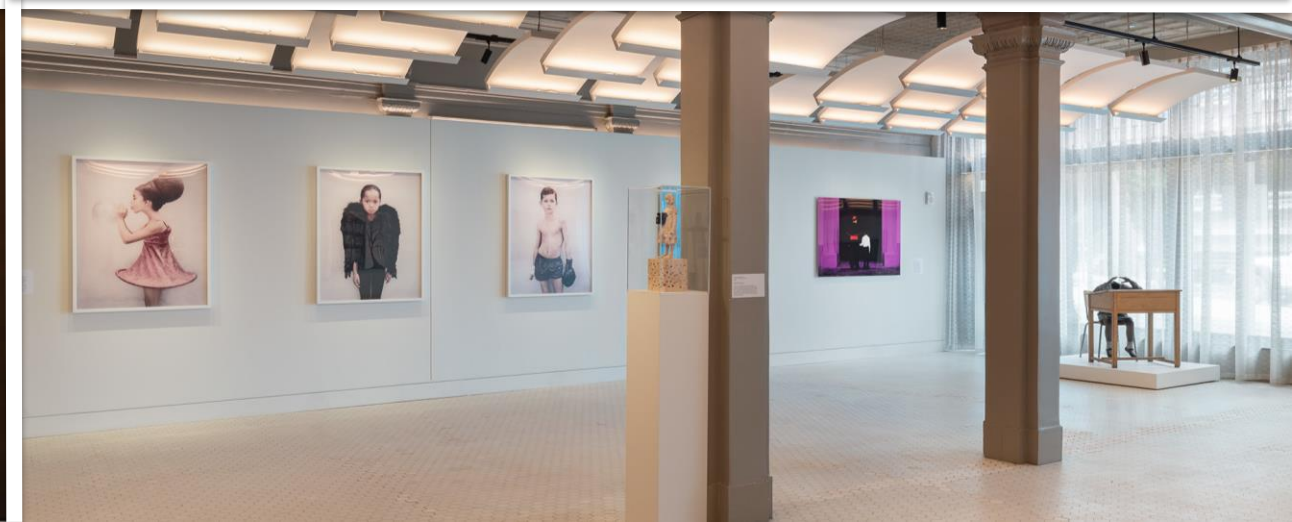
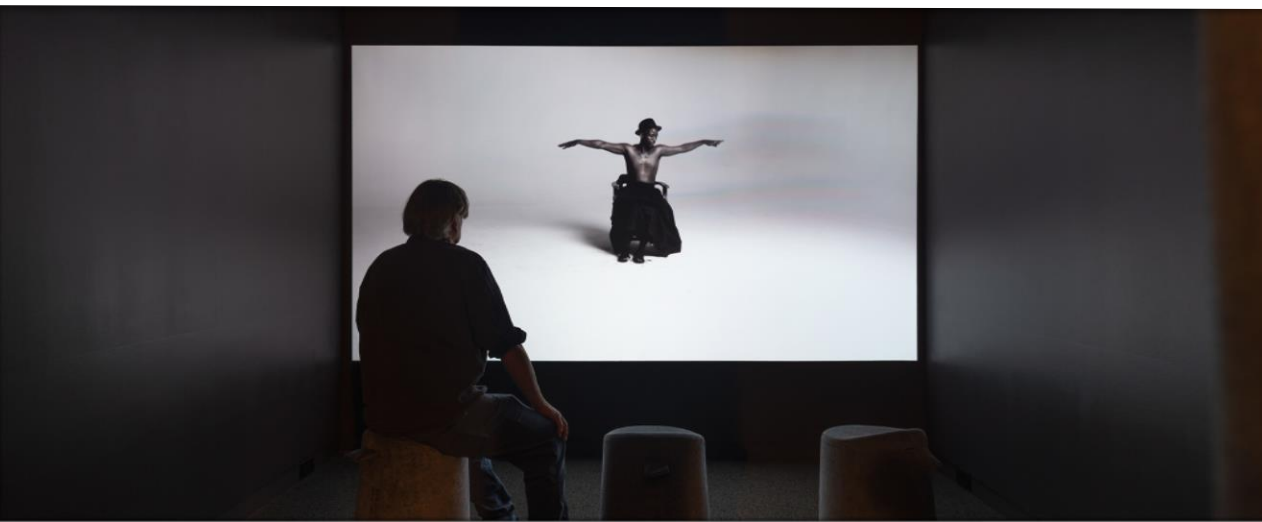
Museum Information

Exhibitions

OFF-SPRING: New Generations

Rituals—religious and cultural, institutional and domestic—provide the thematic infrastructure for *OFF-SPRING: New Generations*. These sculptures, paintings, photographs, and videos employ iconographic imagery to explore the development of both personal and group identity, childhood, family, history, and gender politics. At home, at the wedding altar, or in the classroom; within the fantasy of childhood play or the familiarity of grown-up habit, these new, old narratives generate a spectrum of meditations on the contemporary construction of self and society.

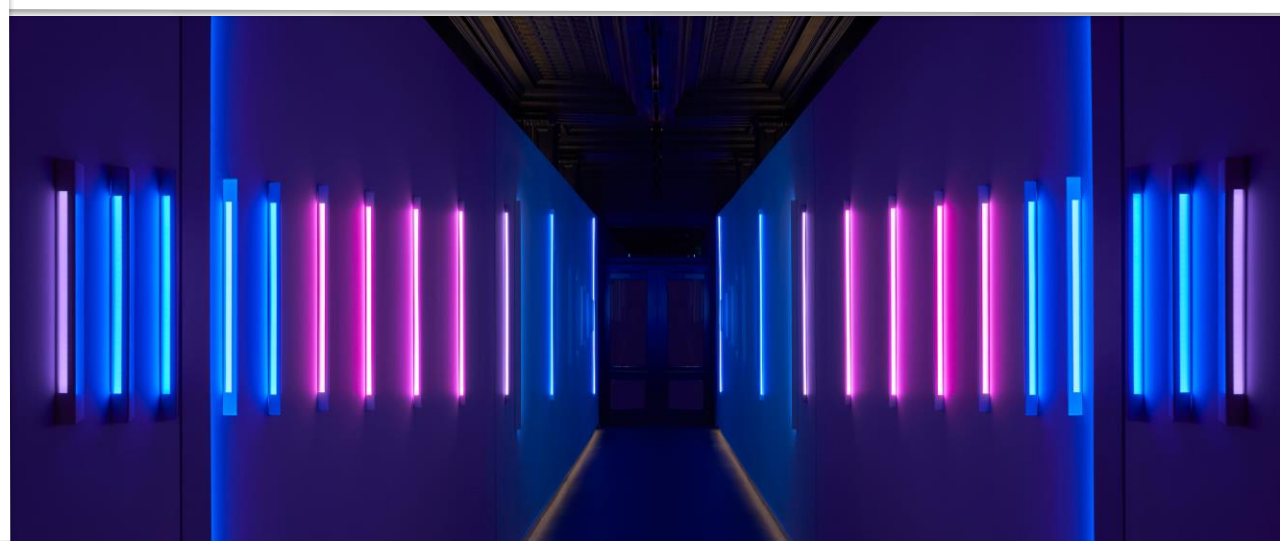
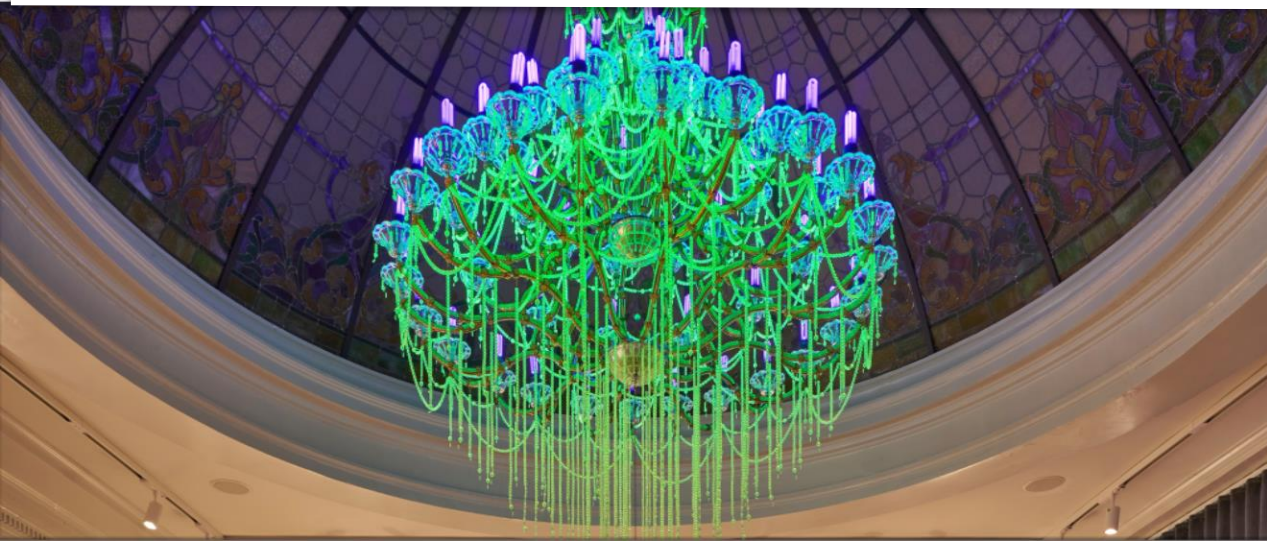
**Always 24/7/365
Free to the Public**





Museum Information-Site Specific Installations

Entering 21c Kansas City, you are surrounded by Luftwerk's *Linear Sky*, whose programmed lighting sequence was inspired by the changing hues of the outdoor skies above the urban landscape of Kansas City. Glowing beneath the historic dome in the lobby of 21c Kansas City, Ken and Julia Yonetani's *U.S.A., Crystal Palace: The Great Exhibition of the Works of Industry of all Nuclear Nations*, is a chandelier made of the rarely employed material of uranium glass. This one is the largest in the series; its size corresponds to the nuclear power capacity of the United States, the largest in the world. In conversation with the art and architecture of the historic Savoy restaurant, Brad Kahlhamer's *Super Catcher, Vast Array* takes the form of multiple Native American dream catchers, transformed into intricate, wire and bell sculptures that shimmer and cast shadows as the light passes over and through the space. Kahlhamer's work affirms the magical, mythical spirit of the dreamcatcher, and expands its power; *Super Catcher, Vast Array* is a superhero—delicate yet strong, heavy with history yet light with new hopes and dreams.





Museum Information

Cultural Programming

Each location hosts regular cultural programming that is free and open to the public, and 21c collaborates on arts initiatives with artists and organizations locally and world-wide. In 2019, 21c hosted more than 2500 free public events, including performances, classes, lectures and museum tours.

Due to the global Covid-19 pandemic, 21c has pivoted to bring much of this cultural programming to virtual platforms, allowing guests and patrons alike to stay involved.



ROOMS





Deluxe King

328 sqft

Escape the hustle of the day with a king-sized bed (featuring incredibly comfortable bedding) with a view of the atrium. Room includes sofa seating and table which can double as a dining area or a workstation, and original artwork by Laura Lee Brown. Bathroom includes glass enclosed shower and original sink from the historic Savoy Hotel. And, as always, the usual 21c amenities – 43” HDTV, Malin+Goetz bath amenities, and free Wi-Fi.



Deluxe Double Queen

385 sqft

Escape the hustle of the day in our deluxe double queen, featuring two (incredibly comfortable) queen beds, seating area with table, and a view of the hotel atrium. Room also features original artwork by Laura Lee Brown. Bathroom features shower/tub combo and original sinks from the historic Savoy Hotel. And don't forget, all the usual 21c luxury amenities – 43" HDTV, Malin+Goetz bath amenities, and free Wi-Fi.





Luxury King

309 sqft

Rest easy in this room with one (incredibly comfortable) king bed and beautiful large windows overlooking Kansas City. The room features a table and sofa which doubles as an eating area and workstation, as well as original artwork by Laura Lee Brown. Bathroom features a large glass-enclosed shower and an original sink from the historic Savoy Hotel. And as always, the usual 21c amenities – 43" HDTV, Malin+Goetz bath amenities, and free Wi-Fi.



Luxury Double Queen

350sqft

Features two (incredibly comfortable) queen beds and beautiful views of Kansas City. You'll also find a seating area with a table and original artwork from Laura Lee Brown. Bathroom features shower/tub combo and the original sink from The Savoy Hotel. And of course, we include all the usual 21c amenities – 43" HDTV, Malin+Goetz bath amenities, and free Wi-Fi.





Corner King

374 sqft

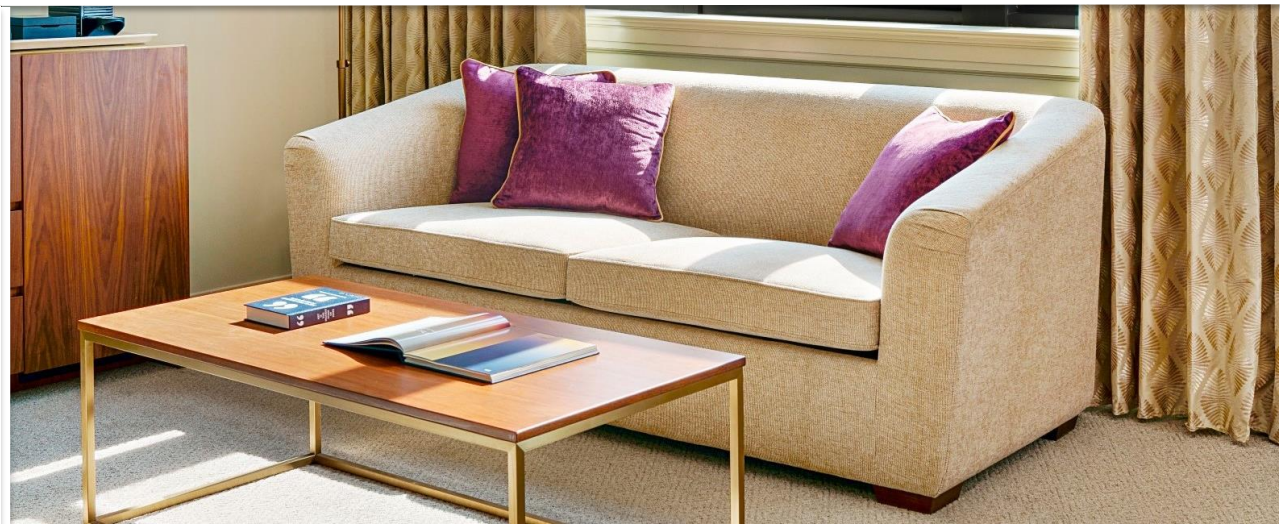
Enjoy an abundance of natural light from the large, expansive windows that wrap around our Corner King room. You'll find one King bed, seating area with table, and original artwork by Laura Lee Brown in the bedroom, with a glass enclosed shower in the bath. And we'd never forget all the usual 21c amenities – 43" HDTV, Malin+Goetz bath amenities, and free Wi-Fi.



Studio Suite

422 sqft

Located on the 7th floor, this suite features an abundance of light and views of downtown KC through large windows. You'll find multiple places to relax in this suite, from the incredibly comfortable) king bed, sofa and workstation, and living area with cozy furnishings. Not to mention, you'll have all the usual 21c amenities – 43" HDTV, Malin+Goetz bath amenities, free Wi-Fi, and original artwork on display in the room.





Deluxe Suite

539 sqft

Relish the peace in this one-bedroom suite facing the atrium. This large room features a large cozy seating area with a separate dining table, as well as a separate bedroom with one king bed. The bathroom features a dual sink vanity and a glass-enclosed shower and Malin+Goetz bath amenities. And of course, all the usual 21c amenities – 43” HDTV, Malin + Goetz bath amenities, and free wifi.



Corner Suite

592 sqft

Enjoy an abundance of natural light in our corner suites. These rooms feature one (incredibly comfortable) king bed, large separate seating area with table, plus all the usual 21c amenities – 43" HDTV, Malin+Goetz bath amenities, free Wi-Fi, and original artwork on display in the room.





Luxury Suite

683 sqft

Oversized windows create a statement in this one-bedroom suite featuring a luxurious king bed and separate living area. Includes all the usual 21c amenities – Malin+Goetz bath amenities, 43" HDTV, free Wi-Fi, and original artwork on display in the room.



21c Suite

925 sqft + 545 sqft outdoor space

Our largest suite with sweeping views of downtown Kansas City, featuring over 500 square feet of outdoor space, features one bedroom with king bed, en-suite bathroom with double vanity sinks, and separate dining and work area. Plus, decked with the usual 21c amenities – Malin+Goetz bath amenities, free Wi-Fi, and original artwork on display in the room.

THE SAVOY



The President's Booth
Harry S. Truman's Favorite



The Savoy

Executive chef Joe West's menu is approachable, shareable, and built around seasonal ingredients. Each section of the menu starts with smaller plates like *Bacon Wrapped Cherry Peppers* and builds to entrees like the *Great Lakes Walleye*. One entire section features dishes including *Slow Roasted Prime Rib* and the *Classic Midwest Burger*. His approach is humorous and thought-provoking, with inspiration drawn from a career of exacting work among a number of some of the most meticulous kitchens.



WEDDINGS



WEDDINGS AT 21c

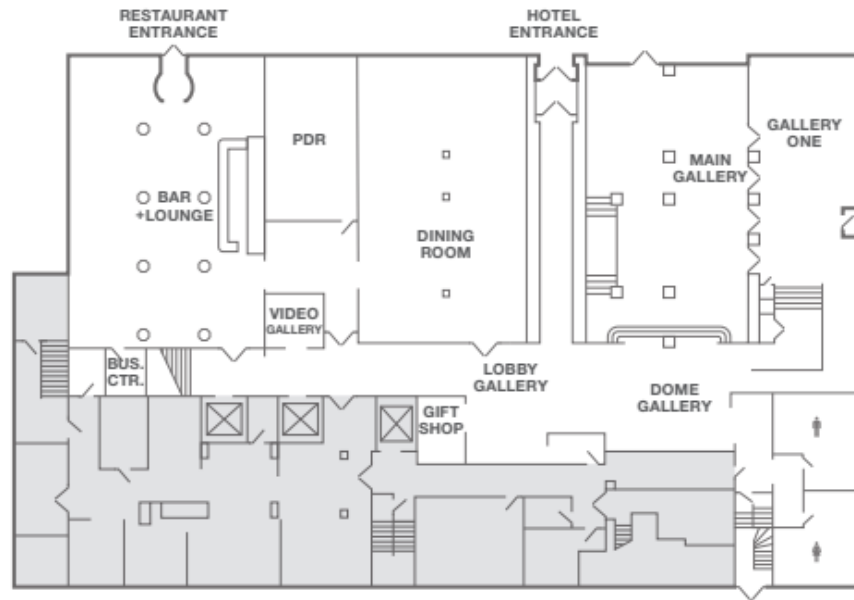
From intimate wedding ceremonies to receptions of up to 150 guests

The Savoy provides innovative served dinners, buffets and dinner station options with farm-to-table house specialties sourced from local vendors. Specially crafted cocktails and full bar service available.

Private contemporary art gallery space in a landmark building with historic design. In addition to on-site catering, dining tables, chairs, linens, silverware, glassware and fine china. Experience Event Manager helps design and orchestrate your special day.



First Floor



Second Floor



MEETINGS + EVENTS





MEETINGS AND EVENTS AT 21c

From executive board meetings and cocktail hours, the intimate space at 21c Kansas City can host 10-120 guests.

Full service in-house catering with The Savoy featuring house-made selections from breakfast, lunch and dinner. Rental includes tables, chairs, linens and flexible setup options. Experiences Event Manager and on-site AV Team to help design and orchestrate your special day.

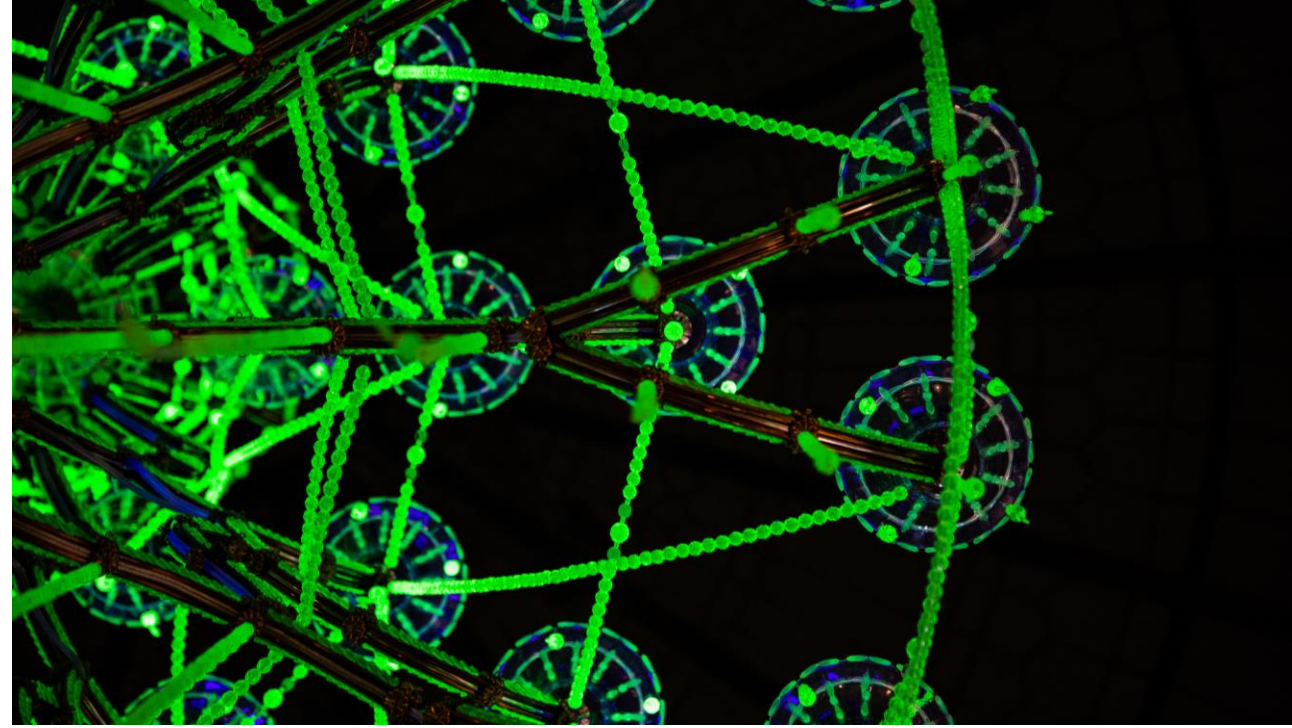
Meeting add-ons include anything from art classes to stir up creativity to health and fitness classes, including yoga classes, to help break up the day. Or add a sweet and salty meeting break.



Room	Floor	Approximate Dimensions	Square Footage	Banquet Rounds	Reception	Hollow Square	Theatre	U-Shape	Conference	Classroom	Crescent Rounds	Tradeshow (perimeter)
Main Gallery	1	55.5' x 31'	1804	90	120	-	115	20	24	90	72	15
Main Gallery w/ Dance Floor	1	55.5' x 31'	1804	70	100	-	-	-	-	-	-	-
Gallery One / Pre-function	1	47' x 18'	851	48	75	-	65	-	18	-	30	8
Dome Gallery	1	25.5 x 21.3	539	-	25	-	15	-	-	-	-	-
Private Dining Room	1	18' x 31.3'	583	32	45	-	-	-	-	-	24	-
Conference Room	2	24.5' x 19'	466	-	-	-	-	-	12	-	-	-
Gallery Two	2	41' x 17'	1131	48	75	20	50	15	28	36	36	10
Gallery Three	2	37' x 16'	620	40	40	20	40	24	20	45	30	12



PROPERTY ACCOLADES



#13 HOTEL IN THE MIDWEST

– Condé Nast Traveler, Readers' Choice Awards
2020

#19 TOP HOTEL IN THE US

– Condé Nast Traveler, Readers' Choice Awards
2019

HOTEL CONTACTS

Tim Roby, General Manager
816.443.4205
troby@21chotels.com

Kim Jessen, Director Of Sales & Marketing
816.443.4210
kjessen@21chotels.com

Rebecca Sprague, Group Sales Manager
816.443.4211
rsprague@21chotels.com



