



21c
BENTONVILLE

20
20



A modern hallway with a dark floor and walls. The walls are illuminated by vertical light strips in magenta and blue. The hallway leads to a set of double doors at the end. The lighting creates a futuristic and artistic atmosphere.

21c is a transformative 21st century hospitality experience, combining a multi-venue contemporary art museum, genuine hospitality, and a chef-driven restaurant.

Locally rooted, yet globally engaged.

The New York Times



SLEEP WITH ART



Founded by married duo Steve Wilson and Laura Lee Brown, 21c is an innovative hospitality experience.

Brought to life to revitalize the downtown core of their beloved hometown of Louisville, KY, Wilson and Brown merged their loves for contemporary art, farm to table dining and hospitality...and by beautiful accident, a brand was born.

9 and on the move

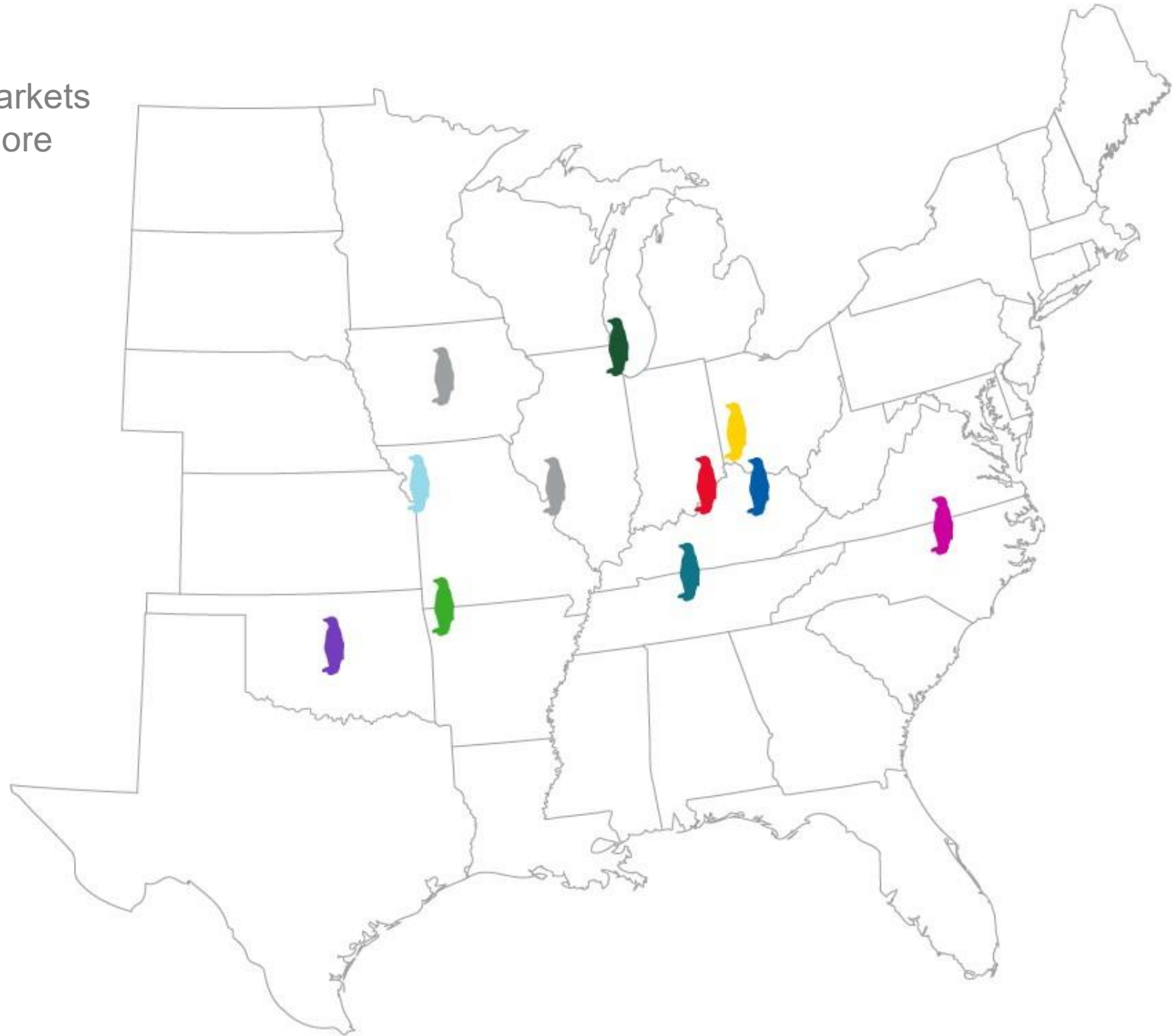
You'll find 21c Museum Hotels in 9 markets across the South and Midwest with more on the way.

Open:

-  21c Louisville (opened 2006)
-  21c Cincinnati (opened 2012)
-  21c Bentonville (opened 2013)
-  21c Durham (opened 2015)
-  21c Lexington (opened 2016)
-  21c Oklahoma City (opened 2016)
-  21c Nashville (opened 2017)
-  21c Kansas City (opened 2018)
-  21c Chicago (opened 2020)

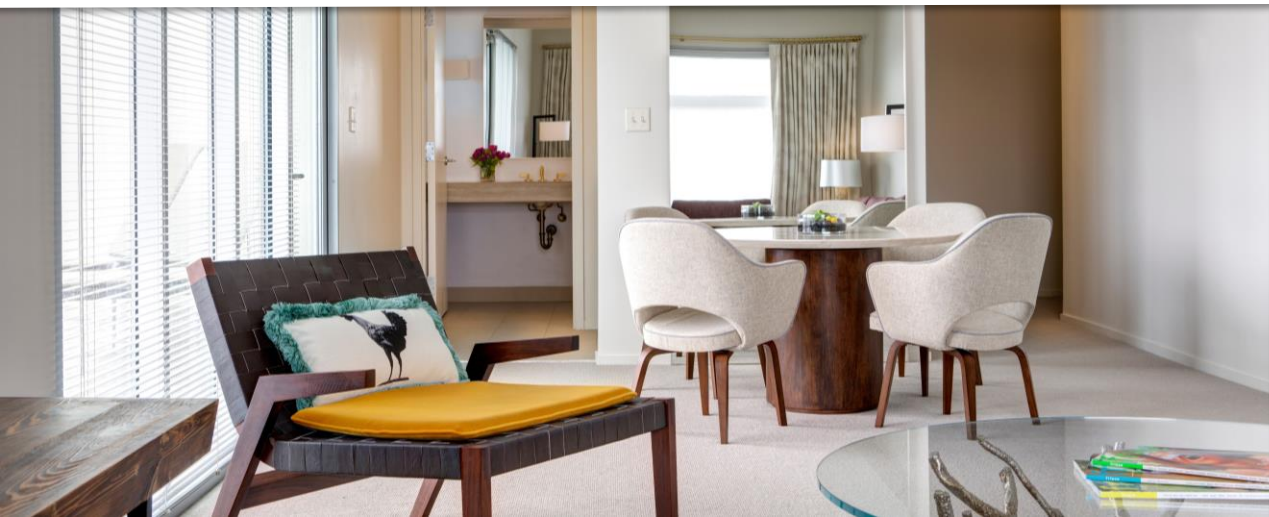
In Development:

- 21c St Louis
- 21c Des Moines



BENTONVILLE





Bentonville

"A New American Town."

Home to Walmart Headquarters,
Crystal Bridges Museum of American Art, and
hundreds of miles of Mountain and Road Bike trails



21C BENTONVILLE





21c Bentonville opened in 2013

Located on the corner of the Bentonville town square and a short walk to Crystal Bridges Museum of American Art.

- Bentonville is 21c's only new build location
- 104 guestrooms
- 12,000 square feet of Public Space
- In house restaurant: The Hive



ALL SAFE PROTOCOLS



MUSEUM





Museum Information

Curated Exhibitions

Refuge: Needing, Seeking, Creating Shelter

As civil strife, economic insecurity, and environmental crises proliferate, artists from across the globe explore the search for refuge—how, why, and where people need, seek, and create shelter. Fantasies and realities of centuries of human flow culminate in our contemporary condition: a world experiencing a massive refugee crisis in which borders are shrunk and shut, and routes to freedom and opportunity have shifted and narrowed into barriers. Narratives of travel and migration – both sought and forced – increasingly define the need for adaptation in a world dominated by disaster and dislocation, where survival may depend on human ingenuity, empathy, and acknowledging our shared vulnerability.

Always 24/7/365

Free to the Public





Museum Information

Site-Specific Installations

What can you expect to see when you visit 21c? Nothing expected, that's for sure. Upon arrival, you'll be greeted by two site-specific artworks- Alexandre Arrechea's *Orange Tree*, a large-scale, many-branched sculpture of basketball hoops, and Monica Mahoney's *Making Change*, a 1962 Fleetwood Cadillac limousine covered in thousands of coins, a nod to the Walmart company's founding and community connection. Dining at The Hive also offers an immersive experience; Johnston Foster's *BuzzKill* transforms the lounge and dining areas with glowing honeycomb, kudzu vines, swarms of bees, and random hidden objects and creatures.





Museum Information

Cultural Programming

Each location hosts regular cultural programming that is free and open to the public, and 21c collaborates on arts initiatives with artists and organizations locally and world-wide. In 2019, 21c hosted more than 2500 free public events, including performances, classes, lectures and museum tours.

Due to the global Covid-19 pandemic, 21c has pivoted to bring much of this cultural programming to virtual platforms, allowing guests and patrons alike to stay involved.



ROOMS





Deluxe King

372 Sq Ft

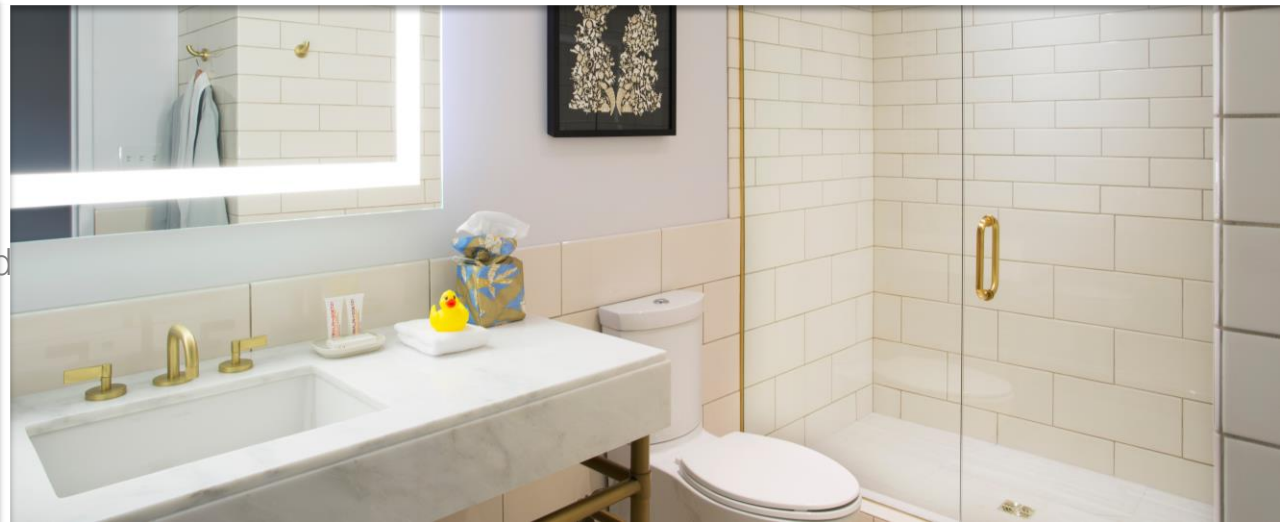
King-sized bed (featuring incredibly comfortable and luxurious bedding) plus seating area with table. Outfitted with the usual 21c amenities – 42" HDTV, Malin+Goetz bath amenities, free Wi-Fi and original artwork on display in the room

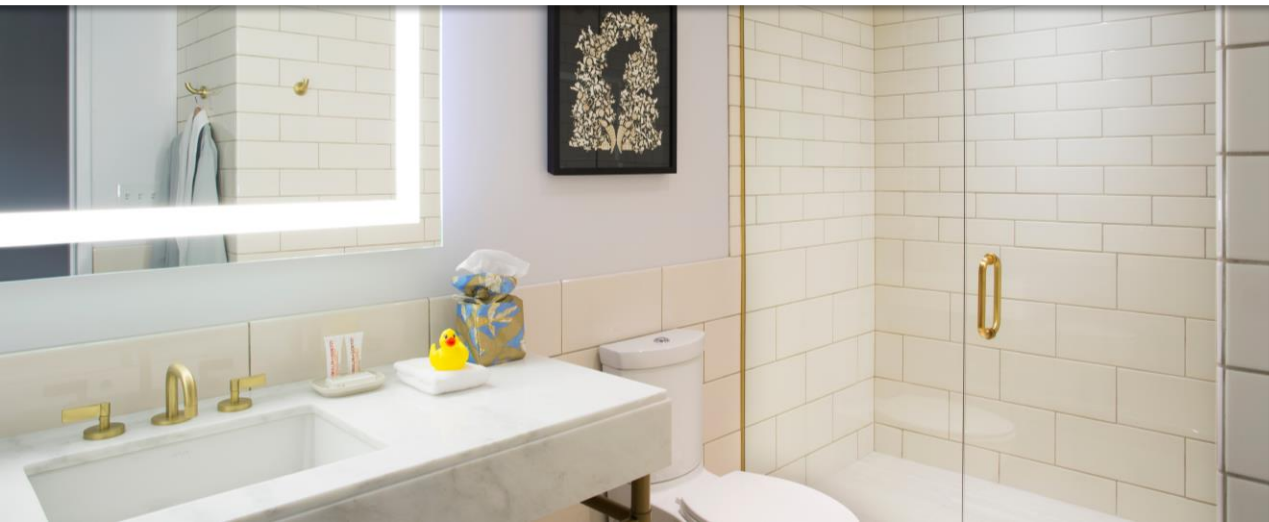


Deluxe Double Queen

390 Sq Feet

Two queen beds (of the most comfortable sort) with all the usual 21c amenities – 42" HDTV, Malin+Goetz bath amenities, free Wi-Fi, and original artwork on display in the room





Luxury King

396 Sq Feet

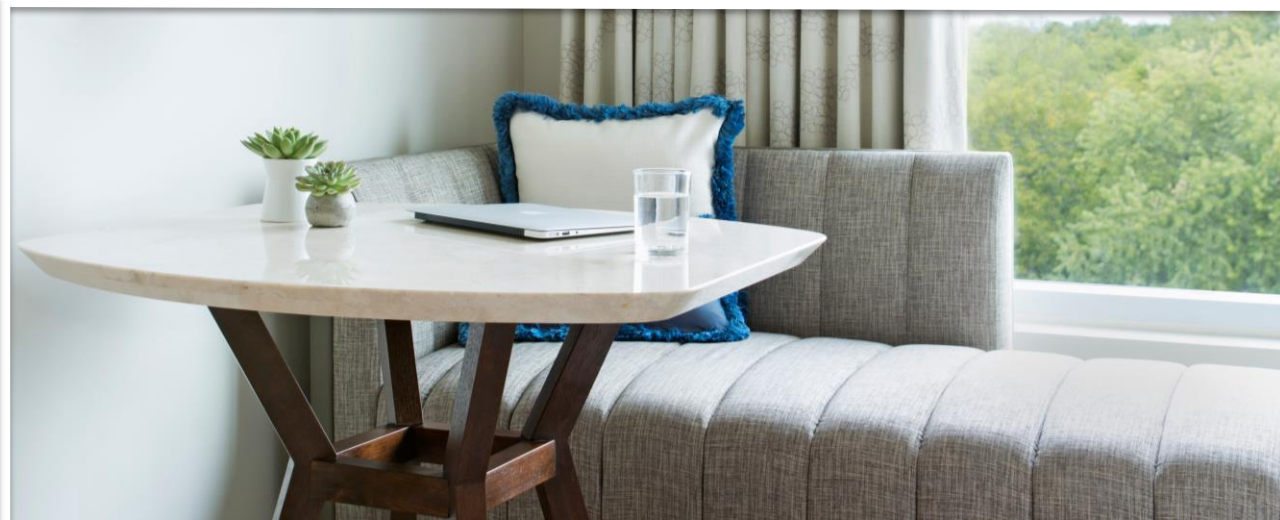
View of Downtown Bentonville square. King-sized bed with seating area and table, plus all the usual 21c amenities – 42" HDTV, Malin+Goetz bath amenities, free Wi-Fi, and original artwork on display in the room



Luxury Double Queen

373 – 487 sq Feet

View of Downtown Bentonville Square. Two queen-sized beds with seating area and table, plus all the usual 21c amenities – 42" HDTV, Malin+Goetz bath amenities, free Wi-Fi, and original artwork on display in the room





Luxury Suite

765 – 810 Sq Feet

King-sized bed with living and dining area, 2 HDTV flat screen televisions, and spacious bathroom with double vanities and wet room with tub and shower. Plus Malin+Goetz bath amenities, free Wi-Fi, and original artwork on display in the room.



21c Suite

840 Sq Feet + 472 Sq Feet Outdoor Terrace

Suite with living and dining area, wet bar, powder room and private outdoor terrace complete, lounge and dining furniture. King size bed in private bedroom. Spacious bathroom features double vanities with in-mirror television and wet room with tub and shower. Amenities include 2 HDTV flat screen televisions, Malin+Goetz bath amenities, free Wi-Fi, and original artwork on display in the room.

ENVIRONMENT





The Hive

Under the direction of executive chef and Arkansas native Matthew McClure, The Hive pays tribute to the High South while articulating McClure's approach to refined country cuisine. The bar + lounge is the perfect place to quench your thirst, entertain important clients or grab a casual bite with friends. The Hive, designed by Deborah Berke Partners, is a communal gathering place for diners to meet and connect with one another in Bentonville.



WEDDINGS



PIC
MUSEUM HOTEL

WEDDINGS AT 21c

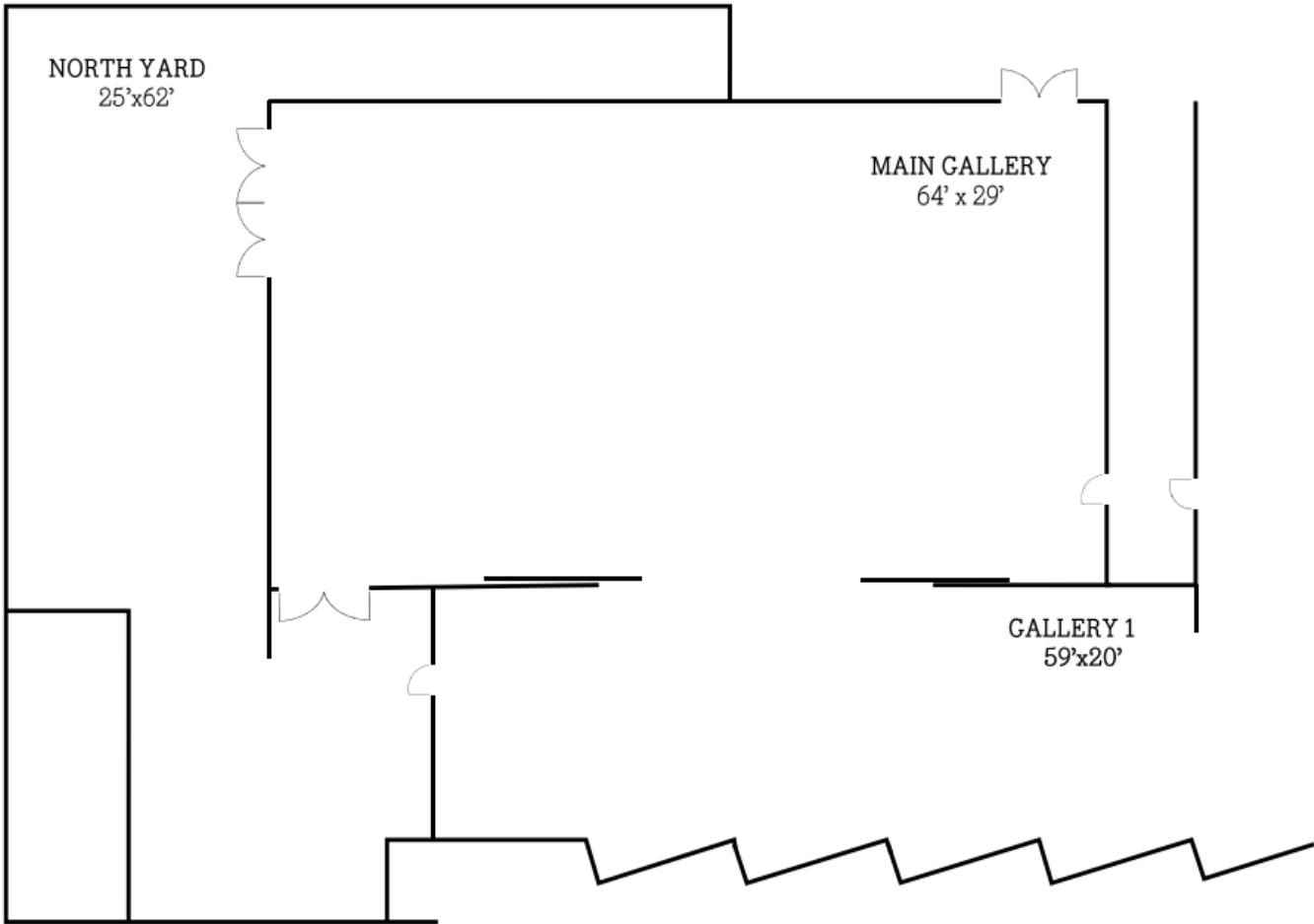
Make your big day a unique experience by hosting your reception, rehearsal or wedding at 21c Bentonville. Our main gallery seats groups of up to 200 and receptions as large as 250. The Hive's culinary team can also prepare a catering menu specifically tailored to your needs.

Some of the many services included in our wedding packages are:

- Complimentary cake cutting and plating
- Custom printed menus
- Choice of black or white color floor-length linen and napkins
- Set-up and tear-down of the space
- Bar set-up and staff
- Indoor and outdoor options
- Complimentary self-parking



Main Gallery



MEETINGS + EVENTS



MEETINGS AND EVENTS AT 21c

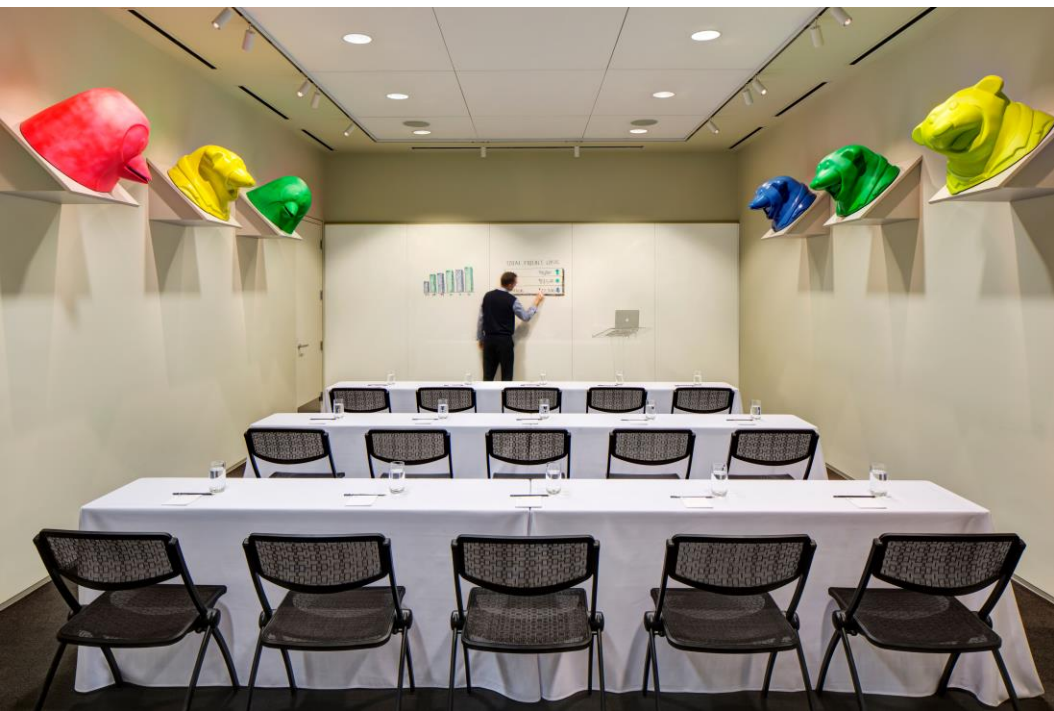
Space is available for private event of 10-480 people, with catering provided by The Hive's culinary team. From a your Board of Directors meeting to epic company holiday party, 21c will make your event memorable.

Services included with our event bookings:

- Full-service 24-hour business center
- State-of-the-art audiovisual equipment
- Complimentary hard-wired and wireless high-speed Internet access
- Professional catering and meeting services
- Setup and tear down of event space
- Mail and package services

Include a whiskey tasting or cocktail class for your team, to really blow them away!



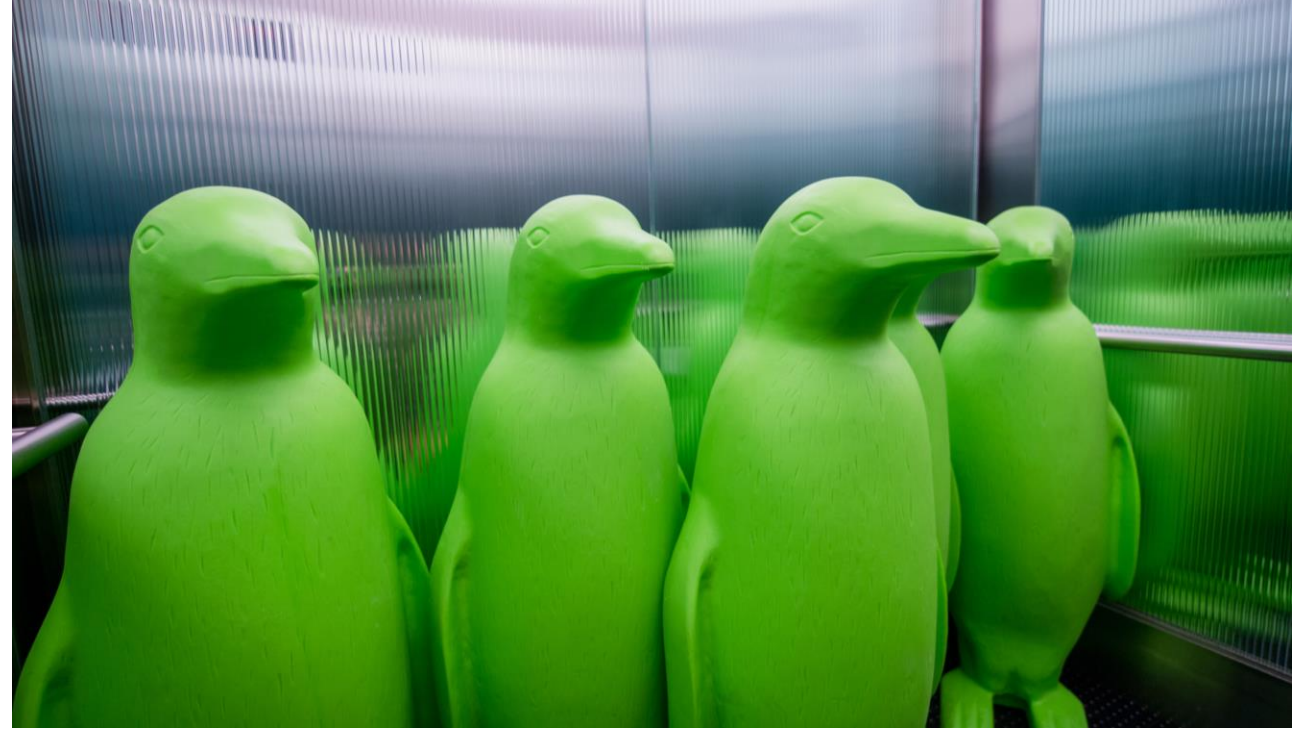


PROPERTY ACCOLADE S



- Conde Nast Reader's Choice Top Hotels in The South: 2017, 2018, 2019, 2020
- Conde Nast Reader's Choice 2020, #34 Top Hotel in the World.
- James Beard Foundation Semifinalist, 2013-2019- Executive Chef Matthew McClure of The Hive.

HOTEL CONTACTS



Claire Thompson, Director of Sales and Marketing

479.286.6510

cthompson@21chotels.com

Andrea Boggs, Sales Manager

479.286.6511

aboggs@21chotels.com

Blade Fry, Reservations Supervisor

479.286.6516

bfry@21chotels.com

