



FAIRMONT HOTEL VANCOUVER

Luxury Suite Options



Fairmont
HOTEL VANCOUVER

SUITES OVERVIEW

Historic Elegance, Time-Honoured Tradition, Exceptional Service

Following a \$75 million renovation completed in 2019, Fairmont Hotel Vancouver is a premier hotel destination in the heart of downtown Vancouver. Boasting a collection of suites that meld the history of the 80 year old building with contemporary decor and modern services, guests will feel like the royalty who have graced the hotel over the years.

RESIDENTIAL APARTMENTS

[VIRTUAL TOUR](#)

MORNINGSIDE SUITE

[VIRTUAL TOUR](#)

LT. GOVERNOR'S SUITE

[VIRTUAL TOUR](#)

ROYAL SUITE

[VIRTUAL TOUR](#)

INCLUDED AMENITIES

Bathrobes

Nespresso coffee maker and tea kettle
with selection of Lot35 tea

Interactive television with in-room
pay movies and video check-out

Refreshment center

Hair dryer

Alarm clock/radio

Large working desk

Large windows with sweeping views

Le Labo Bath Amenities



MORNINGSIDE SUITE

One Bedroom Suite Located on 14th Floor



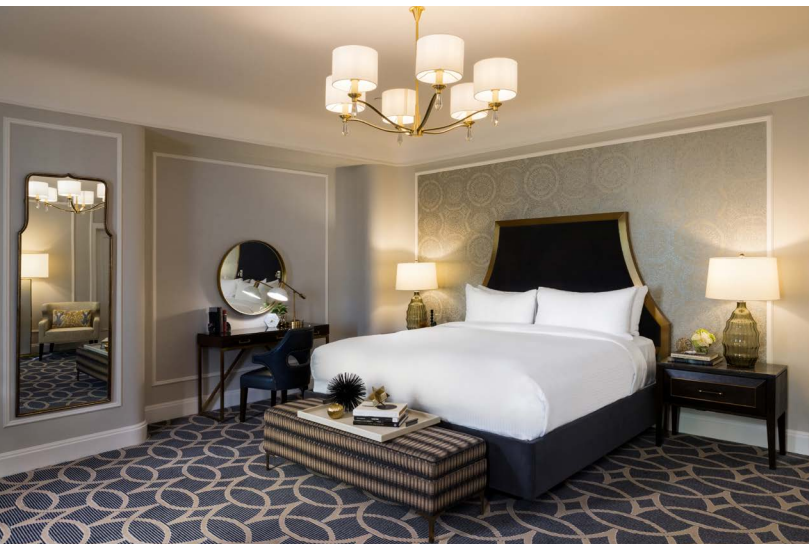
MORNINGSIDE SUITE



Part of the newly restored Fourteenth Floor Heritage Suite Collection, this one of a kind suite reflects the glamour and grandeur of Fairmont Hotel Vancouver's rich history with a chic, contemporary design. Enjoy a beautiful morning sunrise and city skyline views from spectacular floor to ceiling windows. The elegant Morningside Suite boasts a bright and spacious living room and the separate bedroom offers one king bed, luxurious bathroom and working desk area.

ROOM SPECIFICATIONS

Size:	904 sq.ft.
Bed Type:	One King Bed
Location:	14th Floor
View:	City Skyline



VIRTUAL FLOORPLAN & 3D TOUR

[CLICK HERE](#)

A photograph of a dining room. In the foreground, a dark, polished marble table is set for a meal. The table is covered with white plates, silverware, and several clear glass wine glasses. A small green vase with white flowers sits in the center of the table. In the background, a large crystal chandelier hangs from the ceiling. The walls are decorated with a patterned wallpaper and a framed picture. The overall atmosphere is elegant and sophisticated.

RESIDENTIAL APARTMENTS

Three Bedroom Residential Suites

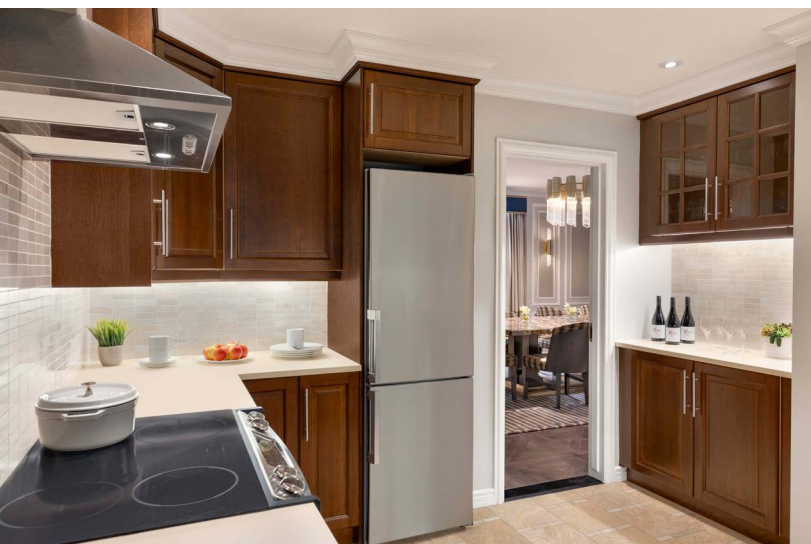
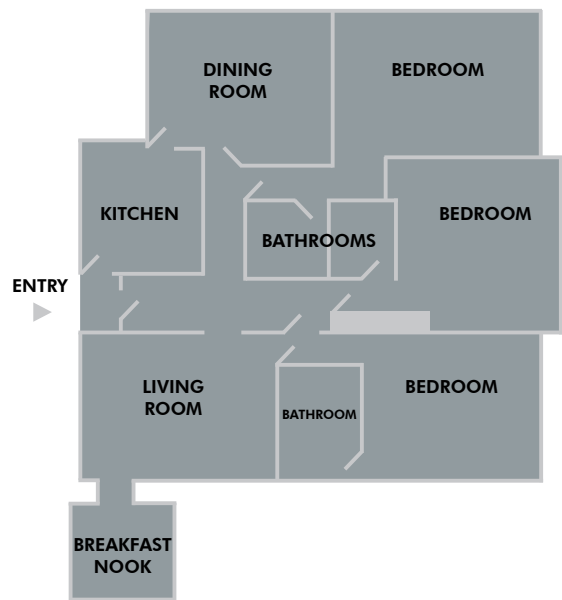
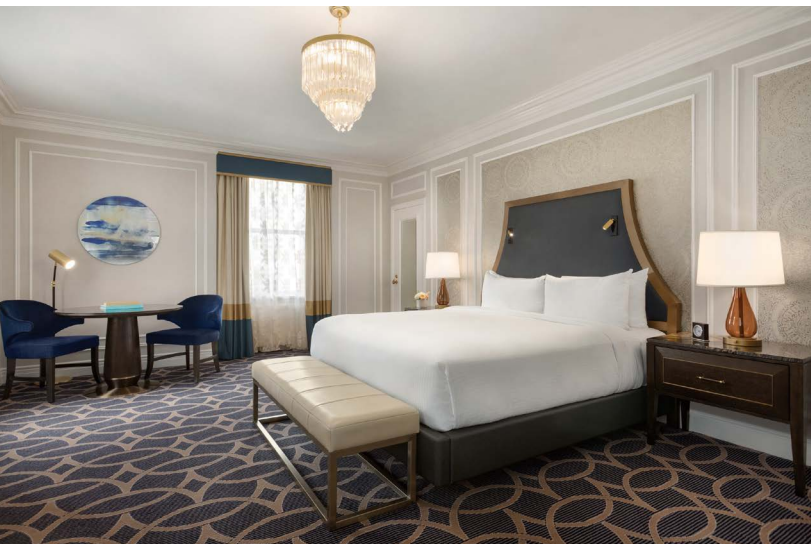
RESIDENTIAL APARTMENTS



Boasting expansive living spaces, a full kitchen and the option to include three bedrooms, Fairmont Hotel Vancouver's Residential Apartments are the perfect option for travelers looking for all of the comforts of home in a luxurious downtown hotel setting. Located on the northeast corner of the building, these Residential Apartments showcase wonderful views of downtown Vancouver.

ROOM SPECIFICATIONS

Size: 1,345 sq.ft.
Bed Type: King Bed (per room)
Location: 9th, 10th & 11th Floors
View: City Skyline



VIRTUAL FLOORPLAN & 3D TOUR

[CLICK HERE](#)

LT. GOVERNOR'S SUITE

Two Bedroom Heritage Suite Located on 14th Floor



LT. GOVERNOR'S SUITE



The glamorous Lieutenant Governor's Suite on the Fourteenth Floor of Fairmont Hotel Vancouver borrows many of its design influences from Art Deco stylings. The art of entertaining is unmistakable in this suite, featuring a wood paneled parlour with sitting area that can accommodate 20 people for gatherings, a master bedroom with sitting area and a spacious ensuite marble bathroom.

ROOM SPECIFICATIONS

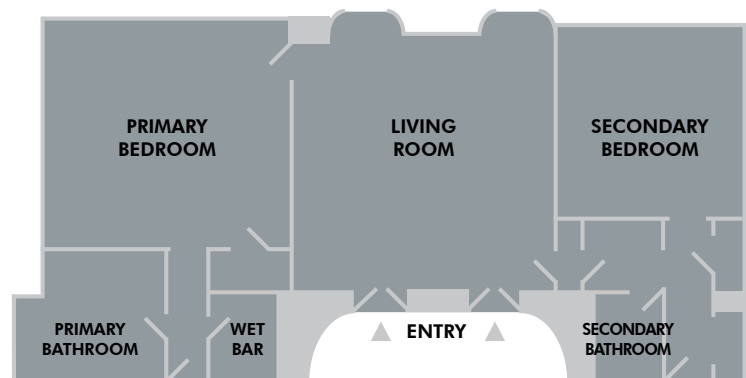
Size:

One Bedroom: 904 sq.ft.
Two Bedroom: 1,250 sq.ft.

Bed Type:

Primary Room: King Bed
Secondary Room: King Bed

Location: 14th Floor
View: City Skyline



VIRTUAL FLOORPLAN & 3D TOUR

[CLICK HERE](#)

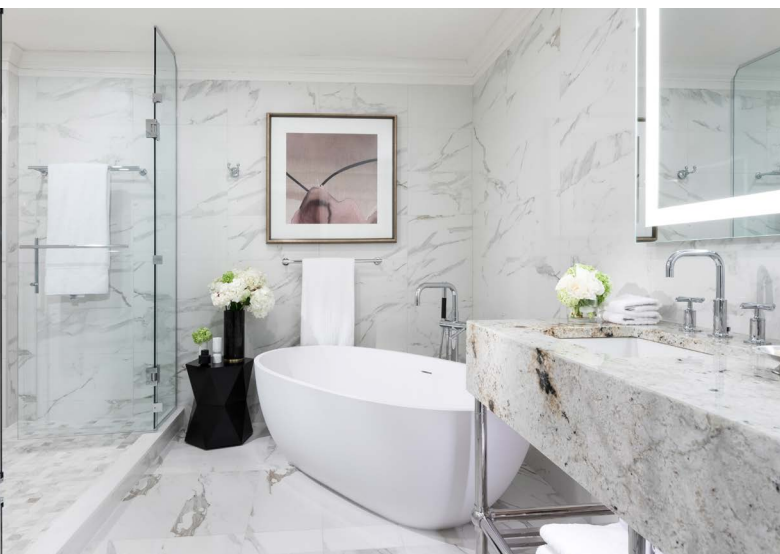
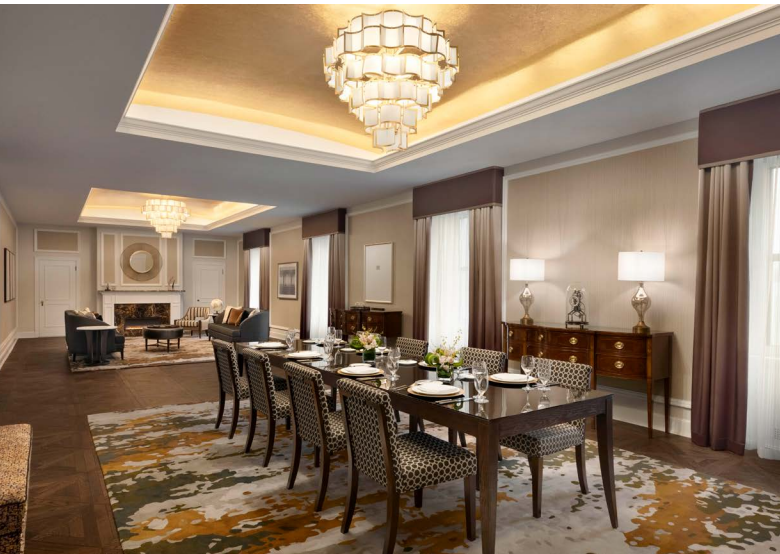


THE ROYAL SUITE

Prestigious Grand Suite Located on 14th Floor



THE ROYAL SUITE



This prestigious suite will make guests feel like the royalty who have graced Fairmont Hotel Vancouver over the years. A royal saturated colour palette paired with opulent and sophisticated finishes provides the ultimate luxury hospitality experience for guests. Boasting an expansive living and dining room space, and with the option to make this suite a one bedroom or two bedroom, as well as one additional adjoining room available, this suite is the perfect place to create memorable experiences.

ROOM SPECIFICATIONS

Size:

One Bedroom: 1,485 sq.ft.

Two Bedroom: 1,885 sq.ft.

Bed Type:

Primary Room: King Bed

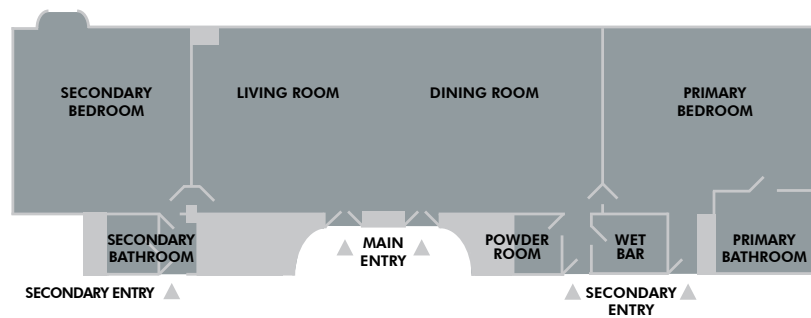
Secondary Room: King Bed

Location:

14th Floor

View:

City Skyline



VIRTUAL FLOORPLAN & 3D TOUR

[CLICK HERE](#)