

HOTEL ÄNDRA

SEATTLE

MGALLERY
HOTEL COLLECTION

HOTELANDRA.COM

HOTEL ÄNDRA

How it all Started



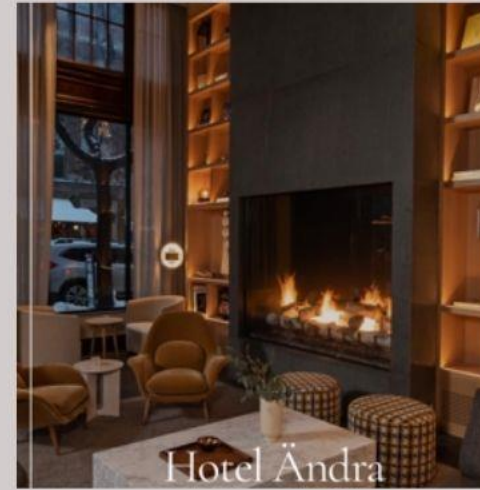
1926

Opened as Efficiency
Apartments



2004

Officially Opened As
Hotel Ändra



2022

Completed a \$12M
Remodel



ABOUT HOTEL ÄNDRA

Whats in a Name

“Ändra” means “change” in Swedish, and changed is what we are.

Ändra’s newly upgraded technology and decor have created a stylishly comfortable, uniquely Seattle, Scandinavian hotel. Experience the tradition of ‘hygge’ and enjoy all that Hotel Ändra has to offer!



HOTELANDRA.COM

ÄNDRA DESIGN

It's All in the Details

Hotel Ändra is uniquely Seattle and a world apart from other Seattle luxury hotels.

The Scandinavian design elements are a tribute to the city's Nordic heritage, while the use of prominent Pacific Northwest elements – water, wood and stone – is present throughout the hotel.

The design reflects the contrast of modernism and sustainability – sleek and textured, light and dark, warm and cool, modern and traditional.

HOTELANDRA.COM





GUESTROOMS

Stylish and Comfortable

Classic Rooms, 1 Queen- 4

Superior Rooms, 1 King -14

Superior Rooms, 2 Queens - 9

Deluxe Rooms, 1 King- 51

Deluxe Rooms, 2 Queens - 19

Junior Suite, 1 King - 4

Corner One Bedroom Suites, 1 King - 19

Premier Corner One Bedroom Suites, 1 King- 2

Monarch Presidential Suite - 1

123 Total Guestrooms



GUESTROOM AMENITIES

Perks for Every Guest

- COMPLIMENTARY WI-FI
- IN-ROOM SAFE
- WALK-IN CLOSET IN MOST ROOMS
- NESPRESSO COFFEE BREWER
- TEA SERVICE AVAILABLE UPON REQUEST
- FULLY STOCKED MINI-BAR
- STAYCAST STREAMING DIRECTLY TO YOUR TV
- WIRELESS CHARGING STATION
- 24 HOUR FITNESS CENTER
- LUXURIOUS LINENS
- COMPLIMENTARY SHOESHINE SERVICE
- COMPLIMENTARY CHOICE OF NEWSPAPERS
- SAME DAY DRYCLEANING AVAILABLE MON-SAT



CLASSIC ROOMS, 1 QUEEN

Perfect for a Quick Getaway

- 200 sq ft
- Large Desk
- Built-in Luggage Storage
- Complimentary Wi-Fi
- Honor Bar- Stocked with your Favorite Treats
- Nespresso Coffee Brewer
- Wireless Charging Pad
- 49" Flat-screen TV with STAYCAST
- Spa Robes
- Custom FACE Stockholm bath amenities





SUPERIOR ROOM, 1 KING

Everything You Need

- 250 sq ft
- 8 ft desk/work area
- Built-in Luggage Storage
- Complimentary Wi-Fi
- Built-in Lounge/Dining Nook
- Honor Bar- Stocked with your Favorite Treats
- Nespresso Coffee Brewer
- Wireless Charging Pad
- 49" Flat-screen TV with STAYCAST
- Spa Robes
- Custom FACE Stockholm bath amenities





DELUXE ROOM, 1 KING

Everything You Need & More

- 400 sq ft
- Most Rooms have Built-in Wet Bar
- Separate Makeup Vanity Area
- 8 ft desk/work area
- Built-in Luggage Storage
- Complimentary Wi-Fi
- Separate Seating Area with Gold Velvet Sofa
- Honor Bar- Stocked with your Favorite Treats
- Nespresso Coffee Brewer
- Wireless Charging Pad
- 49" Flat-screen TV with STAYCAST
- Spa Robes
- Custom FACE Stockholm bath amenities

HOTELANDRA.COM





CORNER ONE BEDROOM SUITE, 1 KING

Need a Little More Space

- 550 sq ft
- Separate Living Room and Bedroom
- Complimentary Turndown Service
- Most Rooms have Built-in Wet Bar
- Separate Makeup Vanity Area
- Complimentary Wi-Fi
- Separate Seating Area with Gold Velvet Queen Sleeper Sofa
- Dining Table that Seats Two
- Honor Bar- Stocked with your Favorite Treats
- Nespresso Coffee Brewer
- Wireless Charging Pad
- 49" Flat-screen TV with STAYCAST in Bedroom
- 55" Flat-screen TV with STAYCAST in Living Room
- Spa Robes
- Custom FACE Stockholm bath amenities





MONARCH SUITE

For The Most Distinguish Traveler

- 1500 sq ft
- Separate Living Room and Bedroom
- Complimentary Turndown Service
- Complimentary Wi-Fi
- Separate Seating Area with Gold Velvet Queen Sleeper Sofa
- Dining Table that Accommodates up to 10 Guests
- Honor Bar- Stocked with your Favorite Treats
- Nespresso Coffee Brewer
- Wireless Charging Pad
- 49" Flat-screen TV with STAYCAST in Bedroom
- 55" Flat-screen TV with STAYCAST in Living Room
- Spa Robes
- Custom FACE Stockholm bath amenities





HOTEL AMENITIES

Stylish and Comfortable

24 Hour Fitness Center

Concierge Services

Onsite Restaurants

Pet Friendly

Meeting Rooms

Team Building Activities

Same Day Dry Cleaning Service Available

Complimentary Shoe Shine Service

LOLA RESTAURANT

Taste the Northwest

Renowned chef and author Tom Douglas' Lola restaurant is a staple of Seattle's dining scene. Lola features the classic produce of the Pacific Northwest mingled with cooking styles of Greece; the menu offers modern Mediterranean and North African riffs on local ingredients such as Anderson Valley lamb, Penn Cove shellfish and wild King salmon.

HOTELANDRA.COM



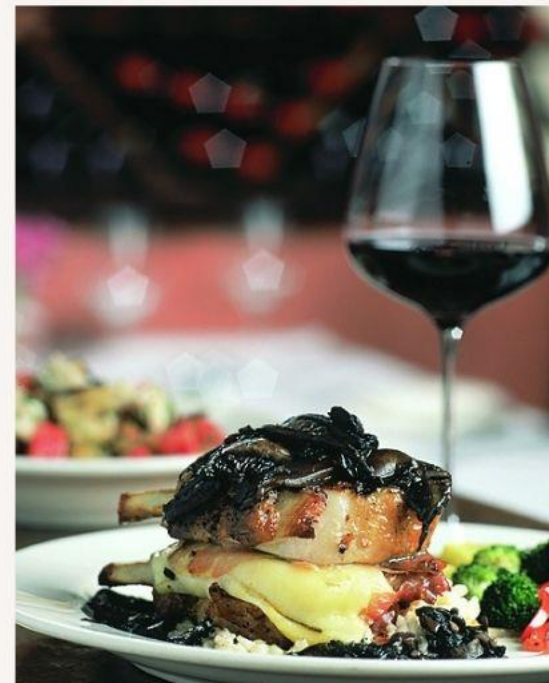
ASSAGGIO

Eat Like a Local

Assaggio Ristorante owner and chef Mauro Golmarvi has created in his menu a welcoming feast that is rich in flavors and authenticity. Assaggio's atmosphere is one of warmth and familiarity, where even first-time diners are welcomed as old friends.

The menu is bold, robust central and northern Italian cuisine, complemented by a wine list hand-selected by owner and chef Mauro Golmarvi.

HOTELANDRA.COM



HOT STOVE SOCIETY

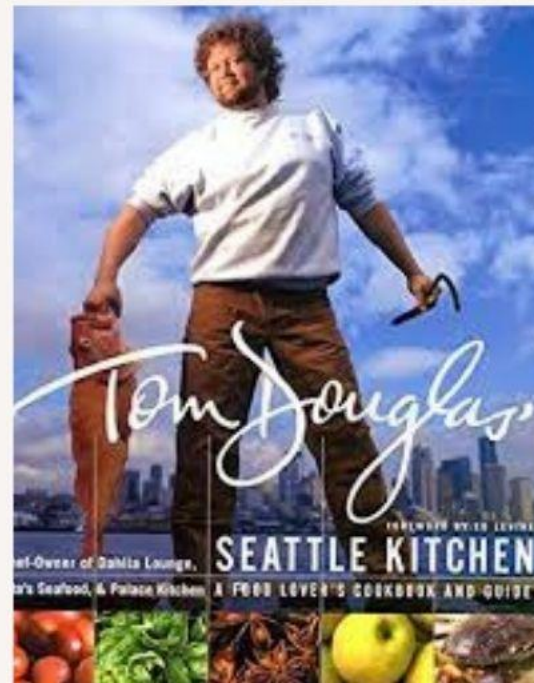
Team Building with the Best

Ever dream of being a contestant on Top Chef? Book an event at Tom Douglas's Hot Stove Society and learn to cook with the best chef in the Northwest!

Hot Stove Society is available to rent for team building events, social cocktail hours & private events. The staff has developed themed competitions and collaborative cooking exercises such as an Iron Chef Battle, Mad Men Martinis, Mystery Black Box, and Destination Dry Rub.

- Hands-On Demos - 35 people
- Lecture & Demo - 35 people
- Standing Reception - 50 people

HOTELANDRA.COM



NORTHERN LIGHTS ROOM

Meet in Style

A space unlike any other, featuring an interactive kitchen that can be discretely hidden behind rich wood paneling and then revealed at the time of meal service.

A warm enveloping color scheme defines the room, sparked by sleek touches. Meetings and receptions are well-suited to this dramatic, yet flexible, space.

- 1,000 Sq. Ft
- Half Rounds- 36 people
- Full Round- 54 people
- Reception- 70 people

HOTELANDRA.COM





PET FRIENDLY

Pamper Your Pup

Seattle has more dogs than children, so at Hotel Ändra you can always bring your pup with you for no additional fee!

- NO DOG BREED OR WEIGHT RESTRICTIONS
- NO PET FEE

We provide complimentary dog bowls and blankets



FITNESS CENTER

Sweat in Style

Enjoy an invigorating workout using state-of-the-art exercise equipment. Our fitness center has everything you need!

- (2) ELLIPTICAL MACHINES
- (2) TREADMILLS
- (1) RECUMBENT STATIONARY BICYCLE
- STABILITY BALLS
- FREE WEIGHTS
- STRETCHING & YOGA AREA

Available 24 Hours/ Day

HOTELANDRA.COM



CONCIERGE

We'll do the Work for You

Let our Concierge team make your stay as enjoyable as possible. Our team is ready to assist with anything you may need to enhance your stay.

- SPA SERVICES INCLUDING IN-ROOM MASSAGE
- RESTAURANT RESERVATIONS
- PRINTING/ COPYING SERVICES
- ACTIVITY RECOMMENDATIONS
- TRANSPORTATION SERVICES

A panoramic view of a city skyline across a body of water, with a seagull flying in the sky. The skyline is composed of numerous skyscrapers and buildings of varying heights and colors, including shades of blue, grey, and brown. The water in the foreground is dark and calm, with a white wake visible on the right side. The sky is filled with soft, white clouds, suggesting a bright but slightly overcast day. A single seagull is captured in flight, its wings spread wide, positioned just above the word 'NEIGHBORHOOD'.

NEIGHBORHOOD

HOTELANDRA.COM

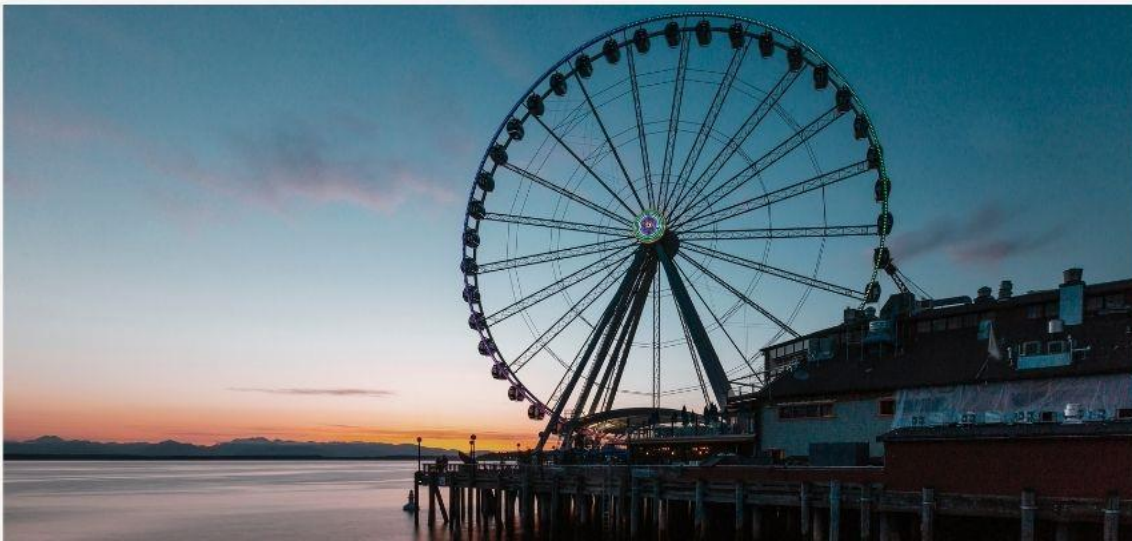


ACTIVITIES FOR ALL

World Class Attractions

Hotel Andra is centrally located in the heart of downtown Seattle and within walking distance to many of the best attractions our city has to offer.

- Pike Place Market
- Climate Pledge Arena
- Seattle Waterfront
- Original Starbucks
- Lake Union
- Seattle Art Museum
- Chihuly Garden and Glass
- Seattle Space Needle
- Olympic Sculpture Park





THANK YOU