



SOFITEL LEGEND CASCO VIEJO

One-of-a-kind epicurean and cultured experience, Sofitel Legend Casco Viejo surprises you by being simple yet sophisticated, glorious yet soothing, emotional yet intellectual.

PANAMANIAN HERITAGE & FRENCH ELEGANCE

Sofitel Legend Casco Viejo is the hidden gem that preserves and awakens the original high society spirit embracing the French glamorous *Joie de Vivre*.

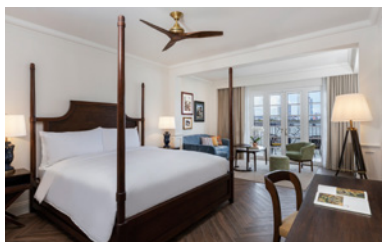
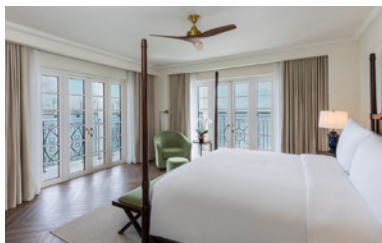
Behind its historic façade originally built in 1917 by James C. Wright as the Club Union, this exclusive private oasis combines a collective vocal history with a contemporary splendor, in which discerning guests continue to be part of the Legend.



ENTER THE LEGEND

ROOMS & SUITES

- Sofitel Legend Casco Viejo offers 159 rooms and suites.
- Rooms ranging from 480 sq. ft. and suites up to 915 sq. ft.
- 87% of the rooms have ocean view.
- 80% of the rooms have a balcony.



MAGNIFIQUE MEETINGS & EVENTS

- Ballroom: Accommodates dinner up to 200 guests, featuring a spectacular outdoor terrace with panoramic ocean views.
- 2 Conference Rooms: Accommodates up to 60 people total.
- All of the event space connects directly to an outdoor plaza.



EXTRA ORDINARY



Caleta

FOOD AND BEVERAGE

- **MAYDA:** The lounge radiates the conviviality & warmth of the classic architecture with today's vibe. Giving guests a chance to savor small plates & perfected cocktails in the lobby and an outdoor courtyard plaza overlooking the bay.
- **CALETA:** Mediterranean brasserie focusing on seafood. Breakfast is *à la carte* with a continental buffet. Everything served is seasonal and simply prepared. The fresh ingredients are showcased with local flavors.
- **AMMI:** A vibrant ambiance with an 180° view of the city and the skyline, Ammi is the "Hotspot" in town. Mix of indoor and outdoor spaces. The place to eat, drink and dance the night away to salsa and latin music.
- **POOL BAR:** Located underneath the courtyard plaza terrace, the juice bar opens in the morning to serve fresh prepared juices. As midday approaches, the kitchen & bar open to serve delightful and health conscious food options and handcrafted cocktails.

WELLBEING

- Sofitel Spa features the exclusive luxury French products for skin and body treatments. Luxurious facilities will feature single and double treatment rooms, a beauty salon, a spacious tea room and a unique Plunge pool area.
- 24-hour Sofitel Fitness offer guests and members a modern urban-style gym with state-of-the-art cardiovascular equipment, private one-on-one training options led by certified trainers and dynamic group classes.
- **CÔTÉ PISCINE:** Laydown and soak up the Panamanian sun as you discover our luxurious waterfront pool overlooking the Pacific Ocean.



IDEAL LOCATION

- Located in the UNESCO protected area of Panama City, the Casco Viejo (old town), with relevant historic buildings nearby, such as "Teatro Nacional" and "La Iglesia del Altar de Oro" with direct access to the banking district through the "Cinta Costera".
- Other relevant places of interest nearby are the Panama Convention Center (12 min.), Biomuseo (12 min.), Panama Cruise Terminal (20 min) and the Panama Canal (25 min.).
- Excellent accessibility, just a 35-minute drive from Tocumen International Airport.
- Premium waterfront location in the heart of the Casco Viejo district.



Sofitel Legend Casco Viejo
Primera Oeste Street, San Felipe, Casco Viejo, Ciudad de Panamá, Panamá.
info.legendpanama@sofitel.com | www.sofitel-legend-panama.com

S O F I T E L
LEGEND